

# Product Information

Version 1.1

## For more information

Website : [www.luxonkorea.co.kr](http://www.luxonkorea.co.kr)  
Email : [sales01@luxonkorea.co.kr](mailto:sales01@luxonkorea.co.kr)  
Phone : +82-10-9869-7751



# Product List

---

**1. Spherical Powder**

---

**2. Surface Treatments**

---

**3. Mineral Suncare**

---

**4. Pigment Dispersion**

---

**5. Natural Rosin**

---

# Spherical Powder #Silica Series



Trade Name	 COSMOS	 Natural Origin(100%)	INCI NAME	Character
SILIA LX3	✓	★	Silica	D50 : 1.5 ~ 4.5 um    OA : 110 ~ 150
SILIA LX7	✓	★	Silica	D50 : 7.0 ~ 11.0 um    OA : 130 ~ 180
SILIA LX13	✓	★	Silica	D50 : 10.0 ~ 15.0 um    OA : 130 ~ 180
SPHESTA SB606		★	Silica	D50 : 4.5 ~ 7.5 um    OA : 40 ~ 90
SPHESTA SB609		★	Silica	D50 : 5.0 ~ 8.0 um    OA : 60 ~ 100
SPHESTA MD6		★	Silica	D50 : 5.0 ~ 8.0 um    OA : 90 ~ 130
SPHESTA MD7	✓	★	Silica	D50 : 5.0 ~ 8.0 um    OA : 90 ~ 130
SPHESTA HS10	✓	★	Silica	D50 : 8.0 ~ 15.0 um    OA : 230 ~ 270
SPHESTA SLX10	✓	★	Silica	D50 : 8.0 ~ 15.0 um    OA : 140~210
 MOONSIL MONO 5, 10		★	Silica	D50 : 3.5 ~ 7.5 um    D50 : 8.0 ~ 12.0
 MOONSIL NAVER 300		★	Silica	D50 : 150nm ~ 450nm
 MOONSIL EMBO NA70		★	Silica	D50 : 7.0 ~ 11.0 um





# Spherical Powder #Coated Silica Series

Trade Name	 COSMOS	 Patent	 Natural Origin(100%)	INCI NAME	Character
SILIA LX7 ASM				Silica & Triethoxycaprylylsilane	D50 : 7.0 ~ 11.0 um
SPHESTA MD7 AM			★	Silica & Lauroyl Lysin	D50 : 5.0 ~ 9.0 um    OA : 80 ~ 120
SPHESTA MD6 ASM				Silica & Triethoxycaprylylsilane	D50 : 5.0 ~ 8.0 um
SPHESTA MD6 MSM				Silica & Methicone	D50 : 5.0 ~ 8.0 um
SPHESTA MD6 DSM				Silica & Dimethicone	D5 : 5.0 ~ 8.0 um
SPHESTA ECO 3	✓	✓	★	Silica & Lauryl Alcohol & Cetyl Alcohol	D50 : 1.5 ~ 4.5 um    OA : 50 ~ 90
SPHESTA ECO 7	✓	✓	★	Silica & Lauryl Alcohol & Cetyl Alcohol	D50 : 7.0 ~ 11 um    OA : 50 ~ 90
SPHESTA ECO H10	✓	✓	★	Silica & Lauryl Alcohol & Cetyl Alcohol	D50 : 10.0 ~ 15.0 um    OA : 170 ~ 210
LX TIS - 35				Silica & Titanium Dioxide	D50 : 5um ~ 10um Titanium Dioxide 35% (250nm) in silica
LX TIS - 35 AS				Silica & Titanium Dioxide & Triethoxycaprylylsilane	D50 : 5um ~ 10um Titanium Dioxide 35% (250nm) in silica
WATER POWDER LX7				Silica & Poly Methyl Silsequioxane	D50 : 5.0 ~ 9.0 um    OA : 60 ~ 140
 EMBO SILICA				Silica & Poly Methyl Silsequioxane	D50 : 5.0 ~ 11.0 um    OA : 60 ~ 140
 SILIA SUN A				Silica & Diethylamino Hydroxybenzoyl Hexyl Benzoate	D50 : 8.0 ~ 15.0
 SILIA SUN T				Silica & Bis-Ethylhexyloxyphenol Methoxyphenyl Triazine	D50 : 8.0 ~ 15.0
 SILIA SUN EHT				Silica & Ethylhexyl Triazone	D50 : 8.0 ~ 15.0



## Spherical Powder #Polymer Series

Trade Name	INCI NAME	Character
LX PMMA PR7	Polymethylmethacrylate	D50 : 5.0 ~ 9.0 um    OA : 30 ~ 70
LX PMSQ P50	Polymethylsilsesquioxane	D50 : 5.0 um    OA : 40 ~ 60
LX PMSQ P100	Polymethylsilsesquioxane	D50 : 10.0 um    OA : 40 ~ 60

## Spherical Powder #Silicone Powder

Trade Name	INCI NAME	Character
 TIFLEX 120	Vinyl Dimethicone/Methicone Silsesquioxane Crosspolymer & TiO2	D50 : 8.0 ~ 13.0 um    OA : 40 ~ 60
ELASTA SP101	Vinyl Dimethicone / Methicone Silsesquioxane Crosspolymer	D50 : 8.0 ~ 15.0 um    OA : 60 ~ 100
 ELASTA HSP101	Vinyl Dimethicone / Methicone Silsesquioxane Crosspolymer	D50 : 8.0 ~ 15.0 um    OA : 60 ~ 100
 ELASTA SP100	Vinyl Dimethicone / Methicone Silsesquioxane Crosspolymer	D50 : 3.0 ~ 8.0 um    OA : 40 ~ 60
 ELASTA SP101S	Vinyl Dimethicone/Methicone Silsesquioxane Crosspolymer & Silica	D50 : 8.0 ~ 13.0 um    OA : 40 ~ 60

## Spherical Powder #Zinc Oxide


Trade Name	 Patent	 Natural Origin(100%)	INCI NAME	Character
SS-2000			Zinc Oxide & Silica & Triethoxycarylylsilane	D50 : 1.0 ~ 3.0 um
LX-SS 2000N (SS2000NLL)	✓	★	Zinc Oxide & Stearic Acid (Zinc Oxide & Silica & Lauroyl Lysine)	D50 : 1.0 ~ 3.0 um

## Spherical Powder #Starch Powder

Trade Name	 Natural Origin(100%)	INCI NAME	Character
LX STARCH POWDER	★	Zea Mays (Corn) Starch & Silica	D50 : < 38

# Surface Treatments #Color Pigment Series



Trade Name	 Natural Origin(100%)	INCI NAME	Character
B-BL ASM		Iron Oxide Black & Triethoxycaprylylsilane	Pigmented
R-RL ASM		Iron Oxide Red & Triethoxycaprylylsilane	Pigmented
Y-LL ASM		Iron Oxide Yellow & Triethoxycaprylylsilane	Pigmented
B-BL AM	★	Iron Oxide Black & Lauroyl Lysin	Pigmented
R-RL AM	★	Iron Oxide Red & Lauroyl Lysin	Pigmented
Y-LL AM	★	Iron Oxide Yellow & Lauroyl Lysin	Pigmented
YPH ASM		Iron Oxide Yellow & Triethoxycaprylylsilane	High Purity, Non-nano Grade
PHILICSTA BLACK	★	Iron Oxide Black & Phytic Acid	Retention on 200mesh sieve 2.0% MAX
PHILICSTA RED	★	Iron Oxide Red & Phytic Acid	Retention on 200mesh sieve 2.0% MAX
PHILICSTA YELLOW	★	Iron Oxide Yellow & Phytic Acid	Retention on 200mesh sieve 2.0% MAX


# Surface Treatments #Coating Powder Series

Trade Name	INCI NAME	Character
LX BIANCO 200	Titanium Dioxide & Triethoxycaprylylsilane & Aluminium Hydroxide	D50 : 200nm ~ 300nm
LX BIANCO 200N	Titanium Dioxide & Stearic Acid & Aluminium Hydroxide	D50 : 200nm ~ 300nm
LX BIANCO 200HD	Titanium Dioxide & Hydrogen Dimethicone & Aluminium Hydroxide	D50 : 200nm ~ 300nm
LX BIANCO 200MSM	Titanium Dioxide & Methicone & Aluminium Hydroxide	D50 : 200nm ~ 300nm
LX BIANCO AHF 200	Titanium Dioxide & Triethoxycaprylylsilane	D50 : 200nm ~ 300nm
PHILICSTA WHITE	Titanium Dioxide & Phytic Acid & Aluminium Hydroxide	D50 : 200nm ~ 300nm / OA : 20 ~ 50



# Surface Treatments #Coating Powder Series



Trade Name	 Natural Origin(100%)	INCI NAME	Character
LX TALC 13R ASM		Talc & Triethoxycaprylylsilane	D50 : 5.0 ~ 10.0 um
LX TALC 46R ASM		Talc & Triethoxycaprylylsilane	D50 : 10.0 ~ 15.0 um
LX TALC 46R DSM		Talc & Dimethicone	D50 : 10.0 ~ 15.0 um
LX TALC AM	★	Talc & Lauroyl Lysine	D50 : 7.0 ~ 15.0 um
LX TALC STMC	★	Talc & Theobroma Cacao Seed Butter	D50 : 7.0 ~ 15.0 um
LX TALC LSA		Talc & Dimethiconol Stearate	D50 : 7.0 ~ 15.0 um

Trade Name	 Natural Origin(100%)	INCI NAME	Character
LX MICA ASM		Mica & Triethoxycaprylylsilane	D50 : 12.0um ~ 17.0um
LX MICA DSM		Mica & Dimethicone	D50 : 12.0um ~ 17.0um
LX MICA AM	★	Mica& Lauroyl Lysine	D50 : 12.0um ~ 17.0um
LX MICA LEM	★	Mica & Hydrogenated Lecithin	D50 : 12.0um ~ 17.0um
LX MICA STMC	★	Mica & Theobroma Cacao Seed Butter	D50 : 12.0um ~ 17.0um
LX MICA LSA	★	Mica & Dimethiconol Stearate	D50 : 12.0um ~ 17.0um

Trade Name	 Natural Origin(100%)	INCI NAME	Character
LX SERICITE ASM		Sericite & Triethoxycaprylylsilane	D50 : 12.0um ~ 17.0um
LX SERICITE DSM		Sericite & Dimethicone	D50 : 12.0um ~ 17.0um
LX SERICITE AM	★	Sericite & Lauroyl Lysine	D50 : 12.0um ~ 17.0um
LX SERICITE LEM	★	Sericite & Lauroyl Lysine	D50 : 12.0um ~ 17.0um
LX SERICITE STMC	★	Sericite & Theobroma Cacao & Seed Butter	D50 : 12.0um ~ 17.0um
LX SERICITE LSA	★	Sericite & Dimethiconol Stearate	D50 : 12.0um ~ 17.0um

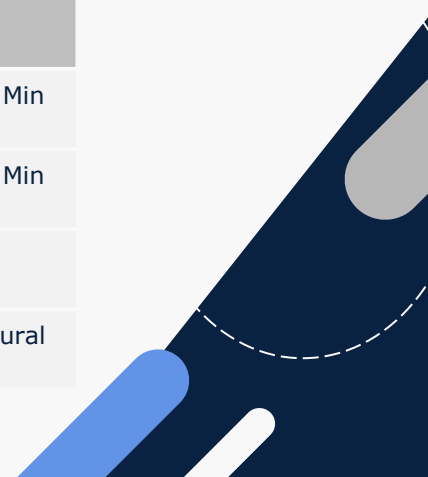
# Mineral Suncare #ZnO Series (UV Blocker)



Trade Name	 Patent	 Natural Origin(100%)	INCI NAME	Character
LX-HPA 30			Zinc Oxide & Triethoxycaprylylsilane	D50 : 30nm ~ 60nm
LX-HPA 30N (* 30NL, 30NLL)		★	Zinc Oxide & Silica & Stearic Acid (* Hydrogenated Lecithin or Lauroyl Lysine)	D50 : 30nm ~ 60nm    Natural Coating
LX-HPA 150			Zinc Oxide & Triethoxycaprylylsilane	D50 : 100nm ~ 200nm
LX-HPA 150N (* 150NL, 150NLL)	✓	★	Zinc Oxide & Silica & Stearic Acid (* Hydrogenated Lecithin or Lauroyl Lysine)	D50 : 100nm ~ 200nm    Natural Coating
LX-SS 150			Zinc Oxide & Silica & Triethoxycaprylylsilane	D50 : 100nm ~ 200nm
LX-SS 150N		★	Zinc Oxide & Silica & Stearic Acid (*Lauroyl Lysine)	D50 : 100nm ~ 200nm    Natural Coating
LX-SS 500			Zinc Oxide & Silica & Triethoxycaprylylsilane	D50 : 300nm ~ 700nm
LX-SS 500N ( SS500NLL )	✓	★	Zinc Oxide & Silica & Stearic Acid (*Lauroyl Lysine)	D50 : 300nm ~ 700nm    Natural Coating

# Mineral Suncare #TiO2 Series (UV Blocker)

Trade Name	 Natural Origin(100%)	INCI NAME	Character
LX-100TV		Titanium Dioxide & Aluminum Hydroxide & Stearic Acid	D1 : 0.03 Min, D50 : 0.04 Min / Natural Coating
NT 95		Titanium Dioxide & Aluminum Hydroxide & Stearic Acid	D1 : 0.03 Min, D50 : 0.04 Min / Natural Coating
MICRO BIANCO		Titanium Dioxide & Silica & Triethoxycaprylylsilane	D50 : 30nm ~ 60nm
MICRO BIANCO N (*NL, NLL)	★	Titanium Dioxide & Silica & Stearic Acid (* Hydrogenated Lecithin or Lauroyl Lysine)	D50 : 30nm ~ 60nm / Natural Coating





## Mineral Suncare #ZnO Dispersion Series (UV Blocker)

Trade Name	INCI NAME	Character
LX DZN(DZ) 40AB	ZnO/C12~15 Alkyl Benzoate/Polyhydroxy Stearic Acid / Triethoxycaprylylsilane	30nm(150nm) ZnO 40%
LX DZN(DZ) 705	ZnO & Cyclopentasiloxane & PEG-10 Dimethicone & Triethoxycaprylylsilane	30nm(150nm) ZnO 70%
LX DZN(DZ) 65C	ZnO & Dicaprylyl Carbonate & Polyhydroxy Stearic Acid & Triethoxycaprylylsilane	30nm(150nm) ZnO 65%
LX DZN(DZ) 65CC	ZnO & Coco Caprylate/Caprata & Polyhydroxy Stearic Acid & Triethoxycaprylylsilane	30nm(150nm) ZnO 65%
LX DZN(DZ) 65AB	ZnO & C12-15 Alkyl Benzoate & Polyhydroxy Stearic Acid & Triethoxycaprylylsilane	30nm(150nm) ZnO 65%
LX DZN(DZ) 65W	ZnO & Water & 1,3-Butylene Glycol & Polysorbate 60 & Cetyl PEG/PPG-10/1 Dimethicone & 1,2-Hexanediol & Dimethicone & Hydrogenated Rosinate & Triethoxycaprylylsilane	30nm(150nm) ZnO 65%

## Mineral Suncare #TiO2 Dispersion Series (UV Blocker)

Trade Name	INCI NAME	Character
LX DTN 405	TiO2 & Cyclopentasiloxane & PEG-10 Dimethicone & Stearic Acid & Aluminum Hydroxide	15nm TiO2 40%
LX DTN 555	TiO2 & Cyclopentasiloxane & PEG-10 Dimethicone & Stearic Acid & Aluminum Hydroxide	15nm TiO2 55%
LX DTN 40AB	TiO2/Alumina/C12~15 Alkyl Benzoate/ Polyhydroxy Stearic Acid	15nm TiO2 40%
LX DT 605	TiO2 & Cyclopentasiloxane & PEG-10 Dimethicone & Triethoxycaprylylsilane & Silica	30nm TiO2 60%
LX DT 60C	TiO2 & Dicaprylyl Carbonate & Polyhydroxy Stearic Acid & Triethoxycaprylylsilane & Silica	30nm TiO2 60%
LX DT 60CC	TiO2 & Coco Caprylate/Caprata & Polyhydroxy Stearic Acid & Triethoxycaprylylsilane & Silica	30nm TiO2 60%
LX DT 60AB	TiO2 & C12-15 Alkyl Benzoate & Polyhydroxy Stearic Acid & Triethoxycaprylylsilane & Silica	30nm TiO2 60%
LX DT 55W	TiO2 & Water & 1,3-Butylene Glycol & Polysorbate60 & Cetyl PEG/PPG-10/1 Dimethicone & 1,2-Hexanediol & Dimethicone & Hydrogenated Rosinate & Silica & Triethoxycaprylylsilane	30nm TiO2 55%

# Pigment Dispersion #Color Dispersion Series



Trade Name	INCI NAME	Character
EZH T170	Titanium Dioxide, Butylene Glycol, Polysorbate, Triethoxycaprylylsilane, Aluminum Hydroxide, Silica, Hydrogenated Lecithin	TiO2 70%
EZ TI50	Titanium Dioxide & Water & Butylene Glycol & Poly Sorbate 60 & Cetyl PEG/PPG-10/1 Dimethicone & 1,2-Hexanediol & Dimethicone & Methyl Hydrogenated Rosinate & Phytic Acid & Aluminum Hydroxide	TiO2 50%
EZH IOY50	I.O.Yellow, Propylene Glycol, Butylene Glycol, Poly Sorbate, Triethoxycaprylylsilane, Silica, Hydrogenated Lecithin	Iron Oxide Yellow 50%
EZ IOY40	I.O.Yellow & Water & Butylene Glycol & Poly Sorbate 60 & Cetyl PEG/PPG-10/1 Dimethicone & 1,2-Hexanediol & Dimethicone & Methyl Hydrogenated Rosinate & Phytic Acid	Iron Oxide Yellow 40%
EZH IOR50	I.O.Red, Propylene Glycol, Butylene Glycol, Poly Sorbate, Triethoxycaprylylsilane, Hydrogenated Lecithin	Iron Oxide Red 50%
EZ IOR40	I.O.Red & Water & Butylene Glycol & Poly Sorbate 60 & Cetyl PEG/PPG-10/1 Dimethicone & 1,2-Hexanediol & Dimethicone & Methyl Hydrogenated Rosinate & Phytic Acid	Iron Oxide Red 40%
EZH IOB60	I.O.Black, Propylene Glycol, Butylene Glycol, Poly Sorbate, Triethoxycaprylylsilane, Silica, Hydrogenated Lecithin	Iron Oxide Black 60%
EZH IOB40	I.O.Black & Water & Butylene Glycol & Poly Sorbate 60 & Cetyl PEG/PPG-10/1 Dimethicone & 1,2-Hexanediol & Dimethicone & Methyl Hydrogenated Rosinate & Phytic Acid	Iron Oxide Black 40%

# Natural Rosin Series



Trade Name	INCI NAME	Character
MOICOS-N115	Methyl Hydrogenated Rosinate	3,000~7,000 (25°C)

# Table of Contents

---

## Introduction

### 1. Silica

---

### 2. Coated Silica

---

### 3. Spherical ZnO

---

### 4. Polymer

---

### 5. Silicone Powder

---

# Basic Information Of Spherical Silica



INCI	SILICA
Substance	Silicone Dioxide
CAS No.	7631-86-9
EC No.	321-545-4
EU REACH	Yes
COSMOS	Approved



COSMOS APPROVED



## Application

Color make-up, Skin care, Sunscreen Etc.

Luxon's silica is a **porous amorphous silica** for cosmetics made from mineral-based ingredients.

The LX series is a traditional silica product with particle sizes ranging from 1.5 to 15 micrometers with absorption capabilities of 110 to 180. It is the most widely used product range, suited to both basic cosmetics and color makeup applications.

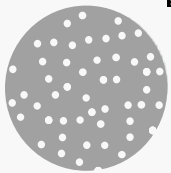
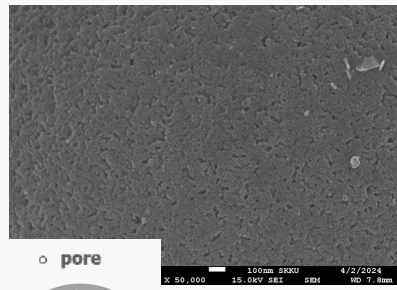
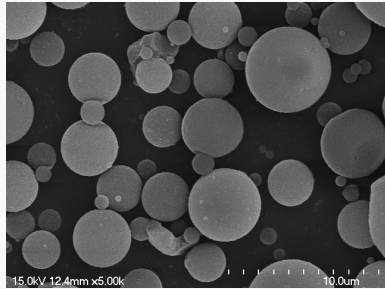
The Sphesta line is made up of silica raw materials with unique characteristics that range by product. If you're seeking for a specific silica, we recommend checking out the Sphesta product range.



## Feature Of Spherical Porous Silica Powder

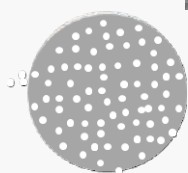
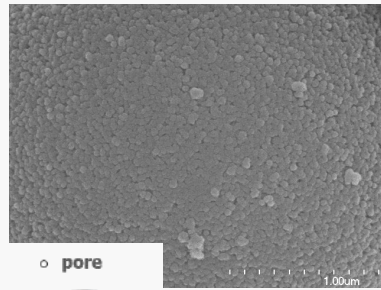
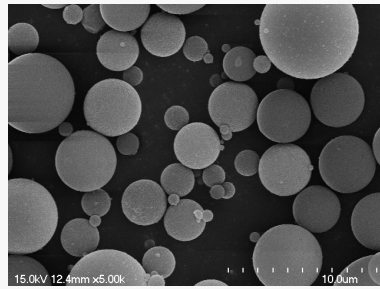
- **High Purity**  
High-purity amorphous silica for cosmetics
- **Sebum Control**  
Absorbs sebum and sweat to provide a matte finish
- **Soft Focus Effect**  
The characteristics of spherical powder include its ability to conceal skin imperfections.
- **Enhance Smooth Feeling**  
Enhances smooth application feel
- **Transparent**
- **Anti-caking**  
Reduces clumping and lumping when incorporated into powder formulations.
- **Can be used in all formulations**

## SB606



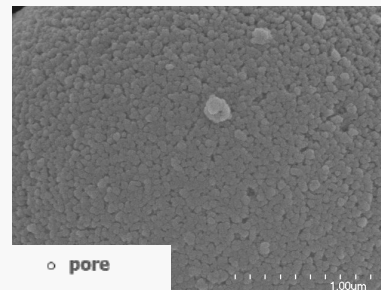
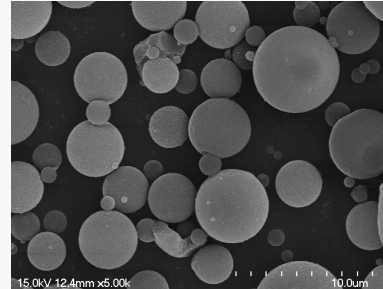
Recommended for use in formulations that provide a velvety, smooth texture and low absorption, ensuring a moist, non-drying feel.

## MD7



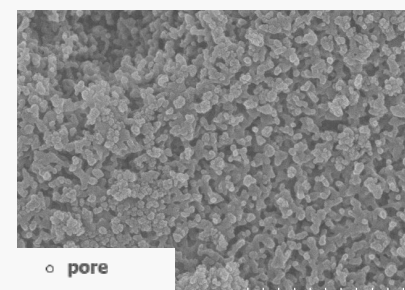
Recommended for use in basic cosmetics, this product offers a smooth texture and controls electrical conductivity, while exhibiting excellent compatibility with various additives

## LX-7



This product provides a smooth texture and excellent absorption of sebum and sweat, making it suitable for use in all formulations with a wide range of applications.

## HS-10

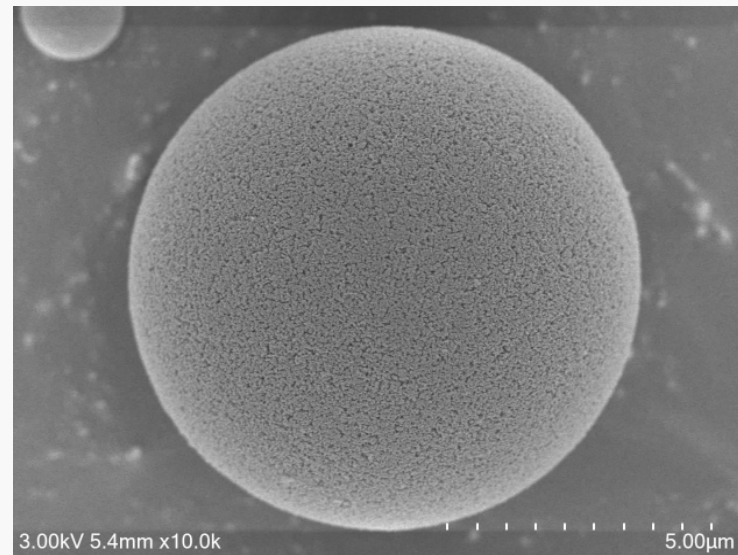
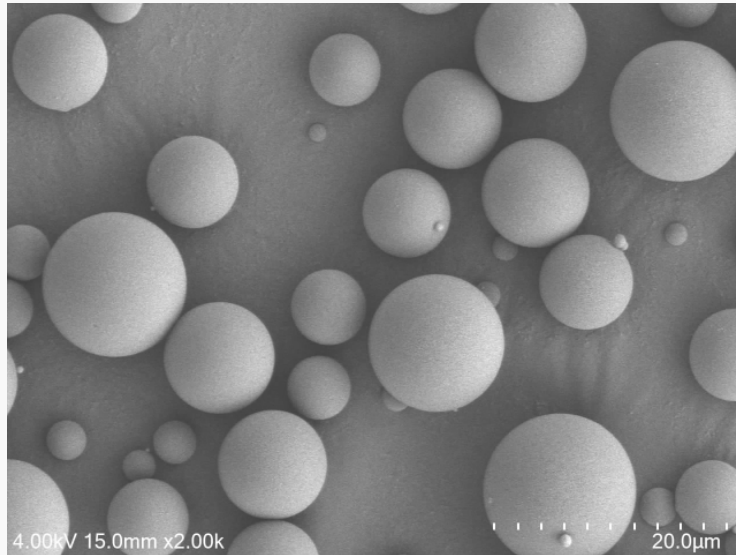


Recommended for use as a soft and transparent high-absorption silica, serving as a medium to absorb various extracts or functional ingredients.

X5000

X50000

### The most clean and transparent silica in the world



#### **Natural Silica**

Our silica is made from pure silica that is sourced naturally and provides outstanding quality and performance.

#### **Non-Nano Silica**

Non-nano silica is an innovative substance used in several sectors that is made up of ultrafine particles. Our non-nano silica has great qualities and remarkable stability.

#### **Smooth Surface Silica**

The smooth surface of your products is enhanced by silica with an excellently refined surface treatment. Our silica with a smooth surface offers superior surface finishing, helping to achieve the best possible outcomes.

Our products are widely used in a variety of industries and ensure excellent quality and performance.

# Non-Nano Silica Transparency of SLX Series



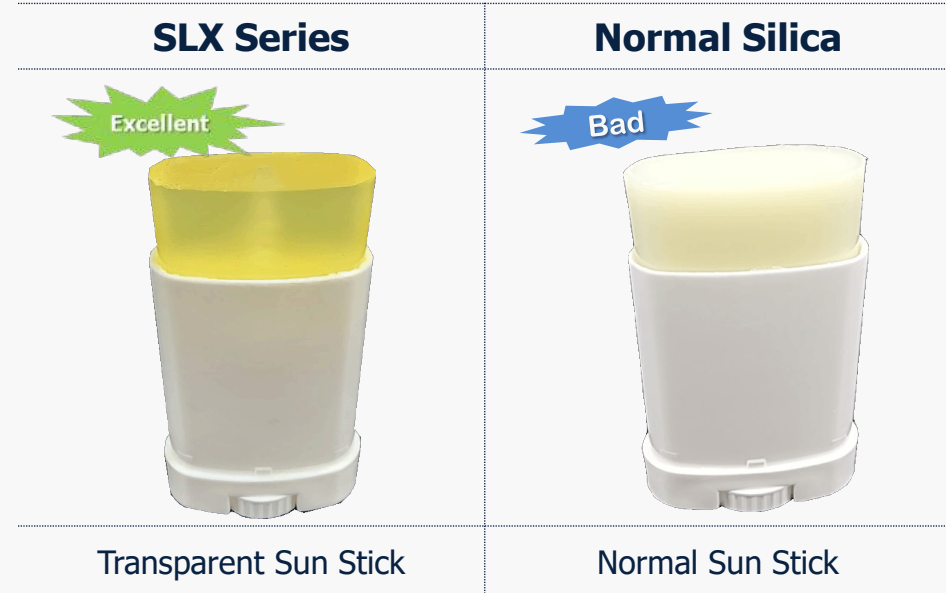
This test effectively illustrates silica's transparency.

Compared to competitor silica transparency results, It shows exceptionally good results.



\* Powder 1%, MCT 99%

When added to oil(MCT), transparency is better than other product.



When used in a sun stick, transparency is excellent!

## ➤ Transparent Sun Stick Formulation

Lab No.: SWK1106ST-WX01

Phase	Ingredient	INCI	%
A	EUTANOL G	Octyldodecanol	TO100
	DISPERSION 2046	Octyldodecanol, Dibutyl Ethylhexanoyl Glutamide, Dibutyl Lauroyl Glutamide 0	30.00
	Cetiol AB	C12-C15 Alkyl Benzoate	20.00
	Preservative	Phenoxy ethanol, Ethylhexylglycerin	p.s
B	Viet A	Retinyl Palmitate	p.S
	Alpha-Melight (ECO) KFDA Grade	Bisabolol	p.s
	PARSOL MCX	Ethylhexyl Methoxycinnamate	7.50
	PARSOL EHS	Ethylhexyl Salicylate	5.00
	Uvinul® A Plus	Diethylamino hydroxybenzoyl hexyl benzoate	4.00
C	Tinosorb® S	Bis-Ethylhexyloxyphenol Methoxyphenyl Triazine	1.00
	<b>CONTROL SILICA Silica</b>		<b>22.50</b>



# Basic Information Of Spherical Coated Silica



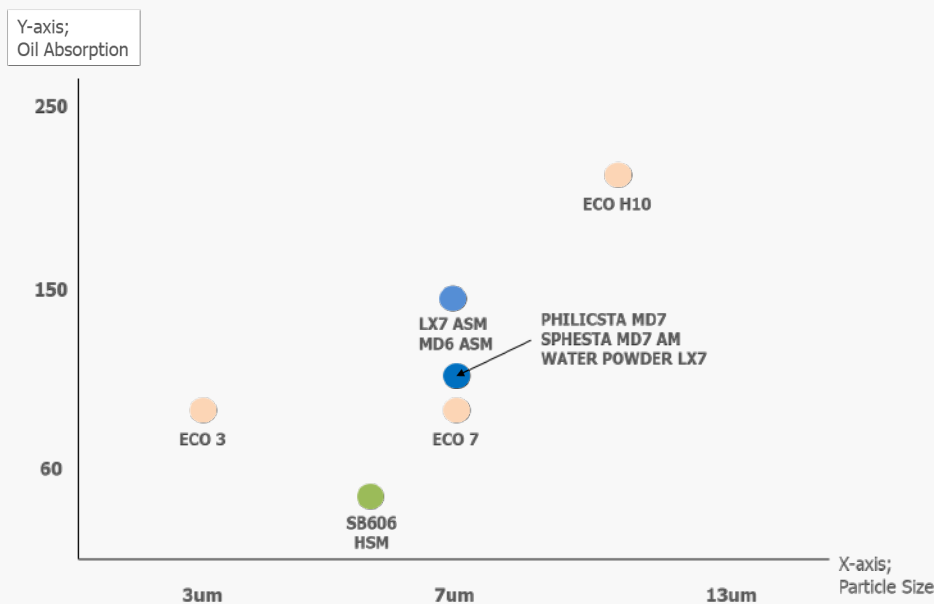
Silica is known as a natural alternative to the microplastics used in cosmetics.

Luxon combines pure silica with other components to create raw materials with qualities similar to microplastic compounds like **PMMA**.

This proactive method efficiently addresses microplastic-related issues.

## Spherical Porous Silica Powder

- Long Lasting Effect
- Improvement Dispensability
- Light Feeling, Soft Feeling
- Slightly Wet Feeling
- Moisturizing Feeling
- **Alternatives to the micro plastic**



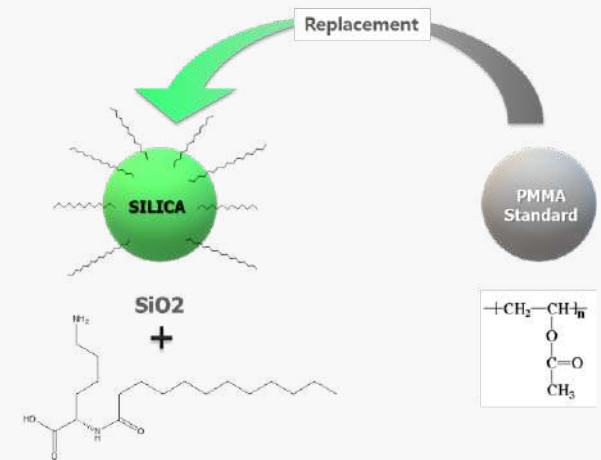
Mark	Ingredients
ASM	Triethoxycaprlylysillane
HSM	Hydrogen Dimethicone
DSM	Dimethicone
MSM	Methicone
ECO	Lauryl Alcohol & Cetyl Alcohol
AM	Lauroyl Lysin
PHILICSTA	Phytic Acid
WATER POWDER	PMSQ

# SPHESTA MD7 AM



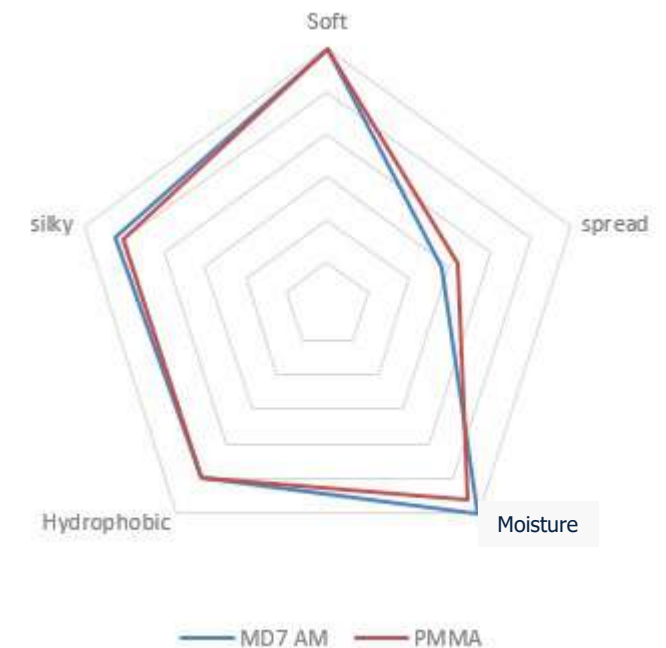
## Feature

- **Sensory**  
Most Similar To Plastic Powder
- **Natural Source**  
Coating Agent : Lauroyl Lysin
- **Selective Sebum Control**  
Fast Absorption



	SPHESTA MD7 AM	PMMA Standard
Type	Spherical Powder	Spherical Powder
INCI	Silica & Lauroyl Lysin	Poly Methyl Methacrylate
CAS. NO	7631-86-9 & 52315-75-0	9011-14-7
Particle Size	5.0 ~ 9.0 um	5.0 ~ 10.0um
Oil Absorption	80 ~ 120	50 ~ 90
Hydrophobicity [LXTM-007]	2.5 Min	3.0 Min

Blind Test 20 People (2021 Jan)



Add Liquid Paraffin & Check After 5 Min

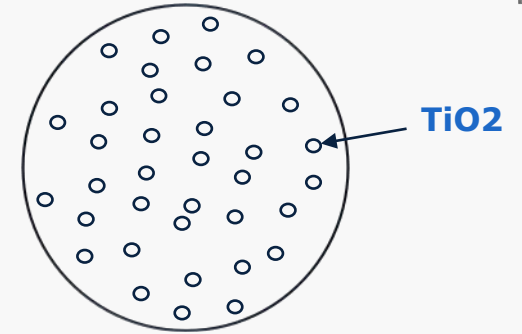


**Fast** Absorption    Normal Absorption    Normal Absorption

# LX-TIS Series



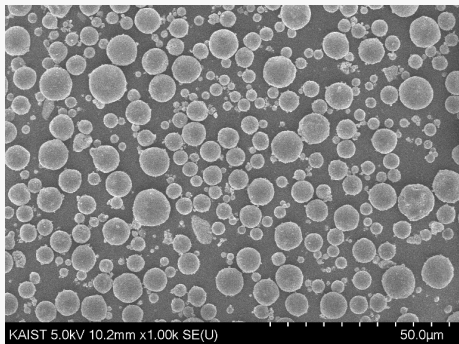
The LX-TIS Series is a product which contains TiO2 in spherical silica.  
 Luxon developed TIS-35 to partially replace TiO2.  
 Compared to TiO2, its main advantage is its gentle feel, which eliminates pore-clogging and gives a natural tone-up.



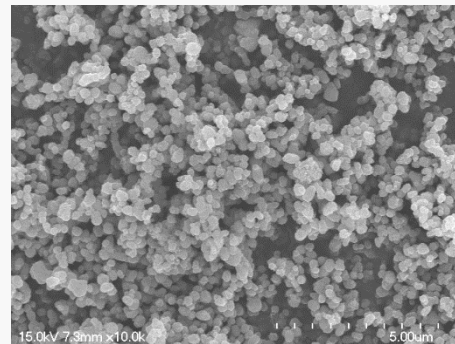
Grade	Descriptions	Proposal	Avg. Particle size(um)	Oil Absorption (ml/100g)
LX TIS-35	Titanium Dioxide 35%(250nm) in Silica	Tone-Up Cream, Sun Cream,	5~10um	90~130
LX TIS-35AS	Titanium Dioxide 35%(250nm) in Silica & Triethoxycaprylylsilane	Whitening Agent, Etc.,	5~10um	80~120

## Feature of LX TIS 35, 35AS

- Natural Coverage
- Luxurious Feel
- Soft Feeling



TIS-35 : **Soft** Sensory



TiO2 : **Rough** Sensory

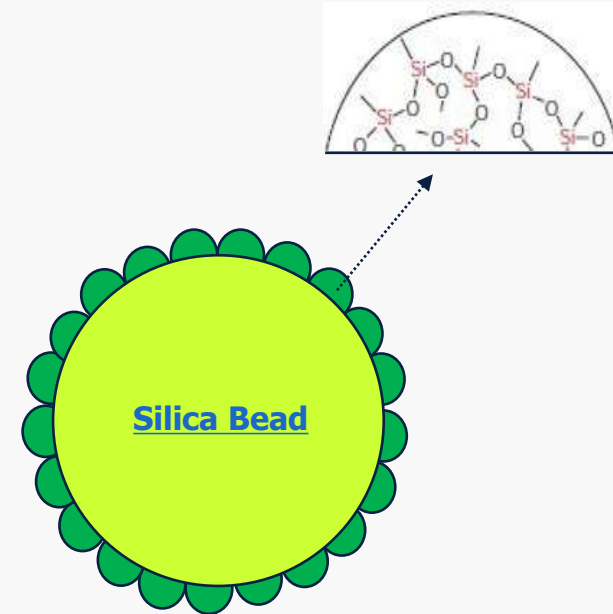
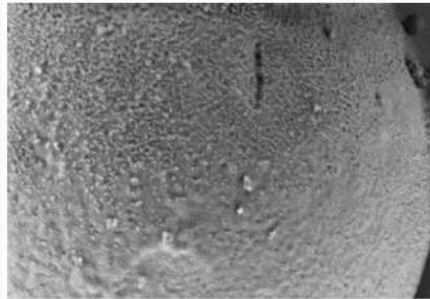
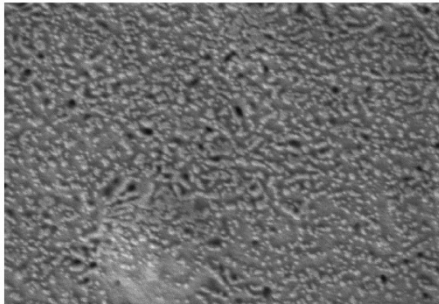


**It's different**

# Water Powder LX7

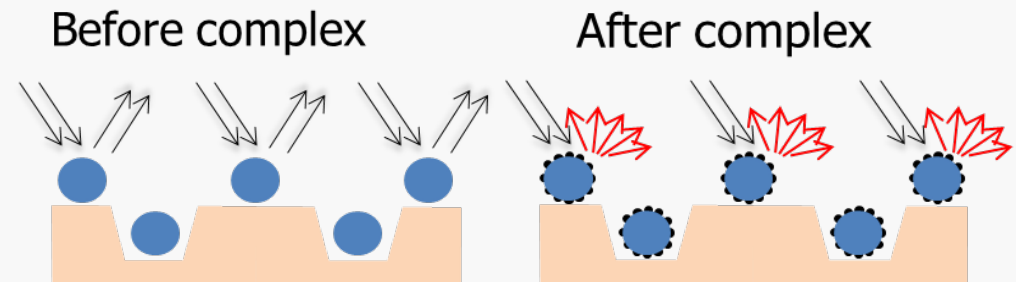
Water Powder LX7 is a hybrid microspheres made of silica and silicone resin that enhances the characteristic feel of silica. When shook, it produces waves similar to those seen in water. It provides an excellent, soft focus effect and soft feeling.

INCI Name	Product Name	CAS.NO	Particle Size(μm)	Oil Absorption (ml/100g)
Silica & PMSQ	Water Powder LX7	7631-86-9 68554-70-1	7 ~ 11	100 ~ 180



## Feature

- Improving The Unique Feel of Silica
- Touch Modifying Agent
- Soft Feel Effect
- Gloss Control (silica)
- Excellent Flow Ability

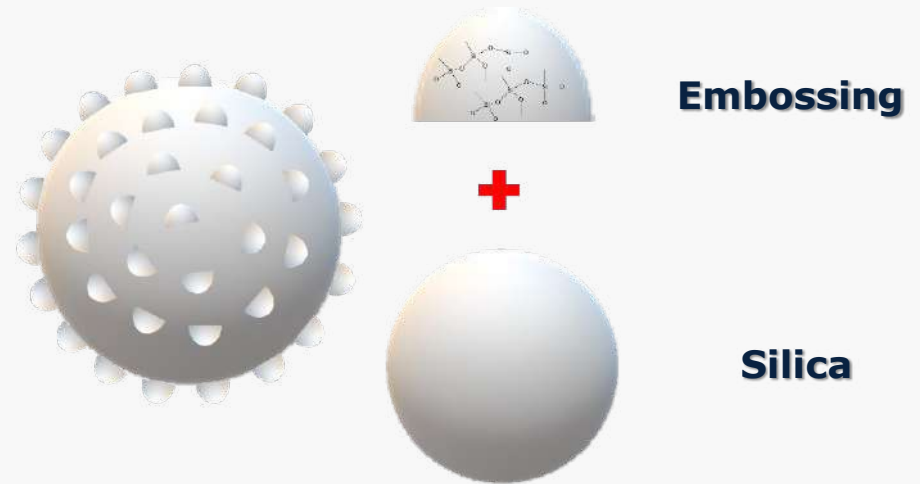


# Embo Silica

## How can silica be soft ?

This silica is embossed with PMSQ on the surface. The embossing can reduce the contact surface and create a soft, smooth feel. So the spreadability can be excellent.

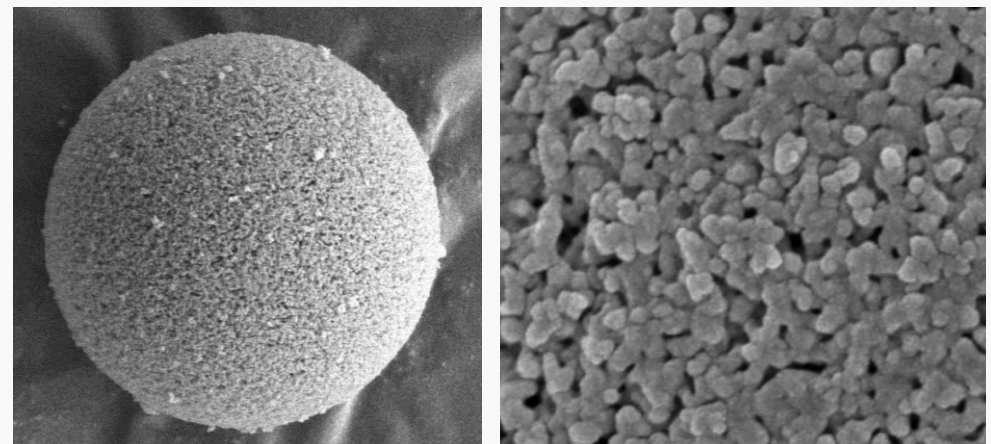
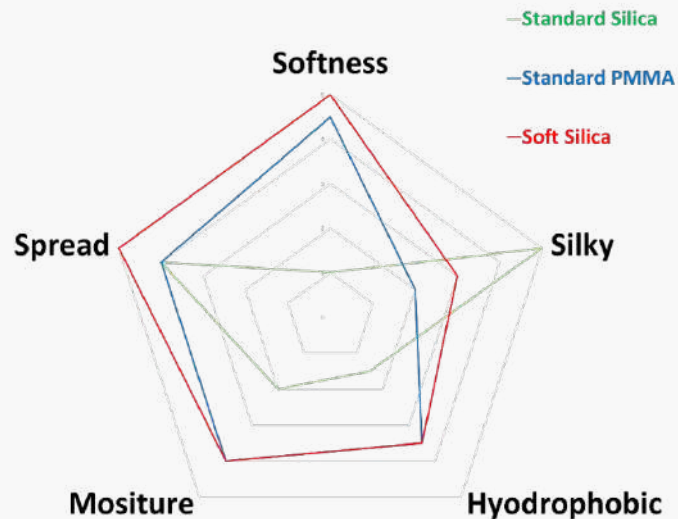
Although the primary material is silica, its texture is comparable to that of polymethylmethacrylate.



Product Name	INCI	Particle Size(μm)	OA
<b>Embo Silica</b>	Silica & PMSQ	5 ~ 11	60 ~ 140



### SENSORY TEST



# Spherical ZnO - SS-2000



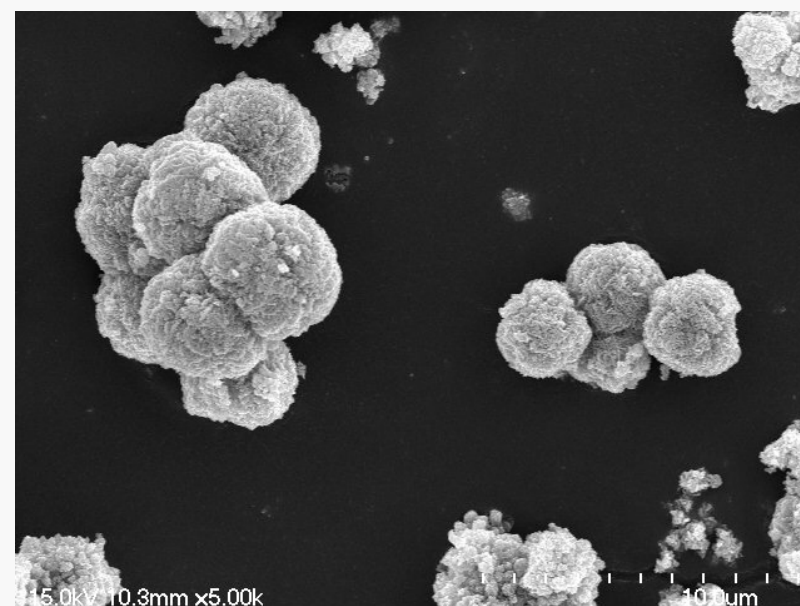
## Feature

- **Replacement of Plastic beads**  
Spherical Zinc Oxide Powder
- **Excellent Sensory**  
Sensory of SS-2000 is better than standard zinc oxide grade
- **Selective sebum control**  
Fast Absorption

	SS-2000
Type	Spherical Powder
INCI	Zinc Oxide & Triethoxycarylylsilane
CAS. NO	1314-13-2 & 2943-75-1
Particle Size	1.0 ~ 5.0 um
Oil Absorption	40 ~ 80
Hydrophobicity [LXTM-007]	3.5 Min

## Absorption Speed Test

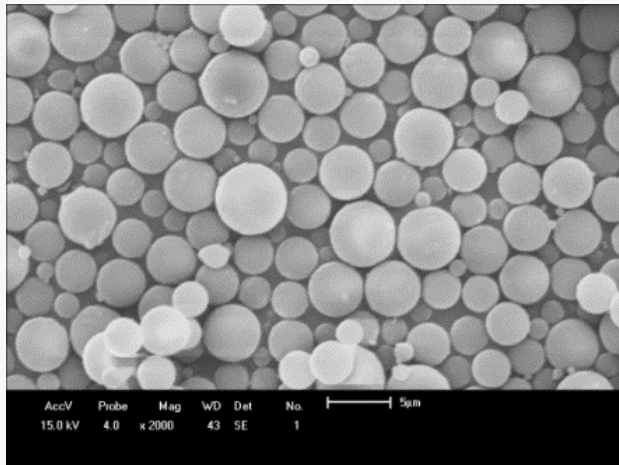
**SS-2000 After Putting 5 Sec**



# Poly Methymethacrylate Powder



**LX PMMA PR7** is an organic crosslinked microsphere, which developed by Luxon's original suspension polymerization. When it was used to cosmetic, it provides a **rolling effect**, the prevents aggregation, creates a lovely smooth texture, absorbs oil etc.



INCI Name	Product Name	CAS.NO	Particle Size(µm)	Oil Absorption (ml/100g)
Poly methyl-metacrylate	LX PMMA PR7	9011-14-7	7	50 ~ 80

## Feature

- Touch Modifying Agent
- Soft Feel Effect
- Gloss Control
- Concealing Effect To Hide Skin Defects



**LUXON PMMA PR7**

**Competitor PMMA**

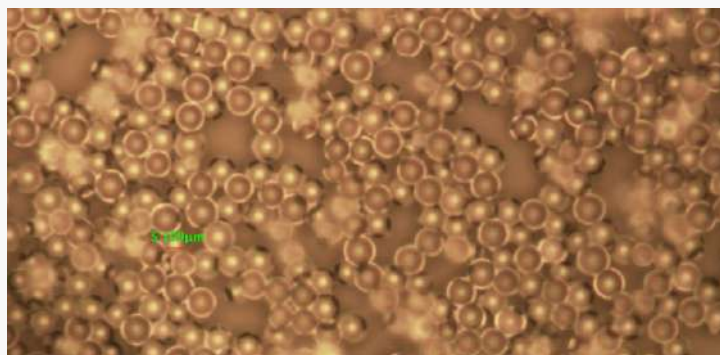
# Poly Methylsilsesquioxane Powder



LX PMSQ is a silicone resin sphere with 3-dimensional network structure.

It can scatter light from as many angles as the **soft focus effect** of the lens, and naturally expresses skin shades.

## LX PMSQ P50

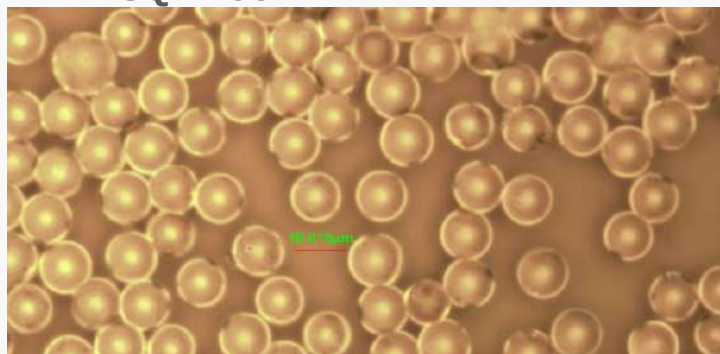


## LX PMSQ Series

INCI Name	Product Name	CAS.NO	Particle Size(µm)	Oil Absorption (ml/100g)
Poly Methyl Silsesquioxane	LX PMSQ P50	68554-70-1	3.5 ~ 6.5	30 ~ 70
	LX PMSQ P100		8.0 ~ 13.0	30 ~ 70



## LX PMSQ P100



## Feature

- Low Reflective Index 1.43
- Does Not Dissolve or Swell In All Sorts of Solvent
- Excellent Water Repellency
- More Lubrication, Flexibility
- Better Skin Feel
- Excellent Elasticity



# Silicone Powder ELASTA HSP101 & ELASTA SP101



ELASTA series are hybrid micro sphere of silicone elastic polymer and silicone resin.

It offers elastic texture when applied to skin.

It makes wrinkles invisible by filling in the lines of wrinkles.

Lower refractive index **leading to soft focus and blurring effect on skin.**

## Softness



Product Name	INCI	CAS.NO	Particle Size(μm)
ELASTA HSP 101	Vinyl Dimethicone /Methicone Silsesquioxane Crosspolymer	153668-87-2	8.0 ~ 15.0
ELASTA SP 101		153668-87-2	8.0 ~ 15.0



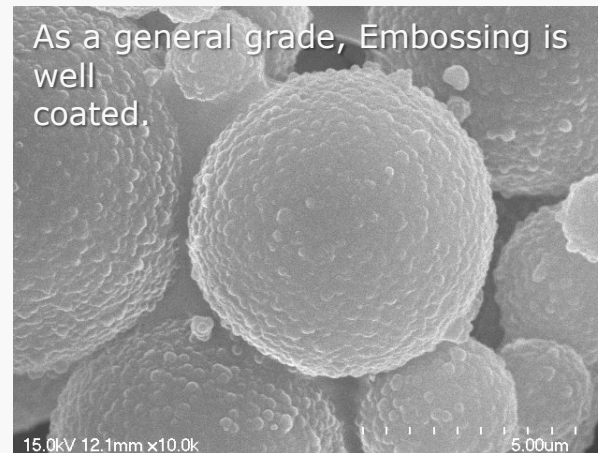
## Feature

- Offer Elastic Texture
- Soft Focus, Blurring Effect Due To Lower Refractive Index
- Excellent Silky, Smooth Texture
- Hydrophobic Surface
- Thickening Effect

## ELASTA HSP 101



## ELASTA SP101



## Application

- Make-up Formulations
- Skin Care Formulations
- Other Potential Formulations

# Table Of Contents

---

## Introduction

### 1. Titanium Dioxide & Zinc Oxide

---

### 2. Iron Oxide

---

### 3. Talc & Mica & Sericite

---

### 4. Philicsta Series

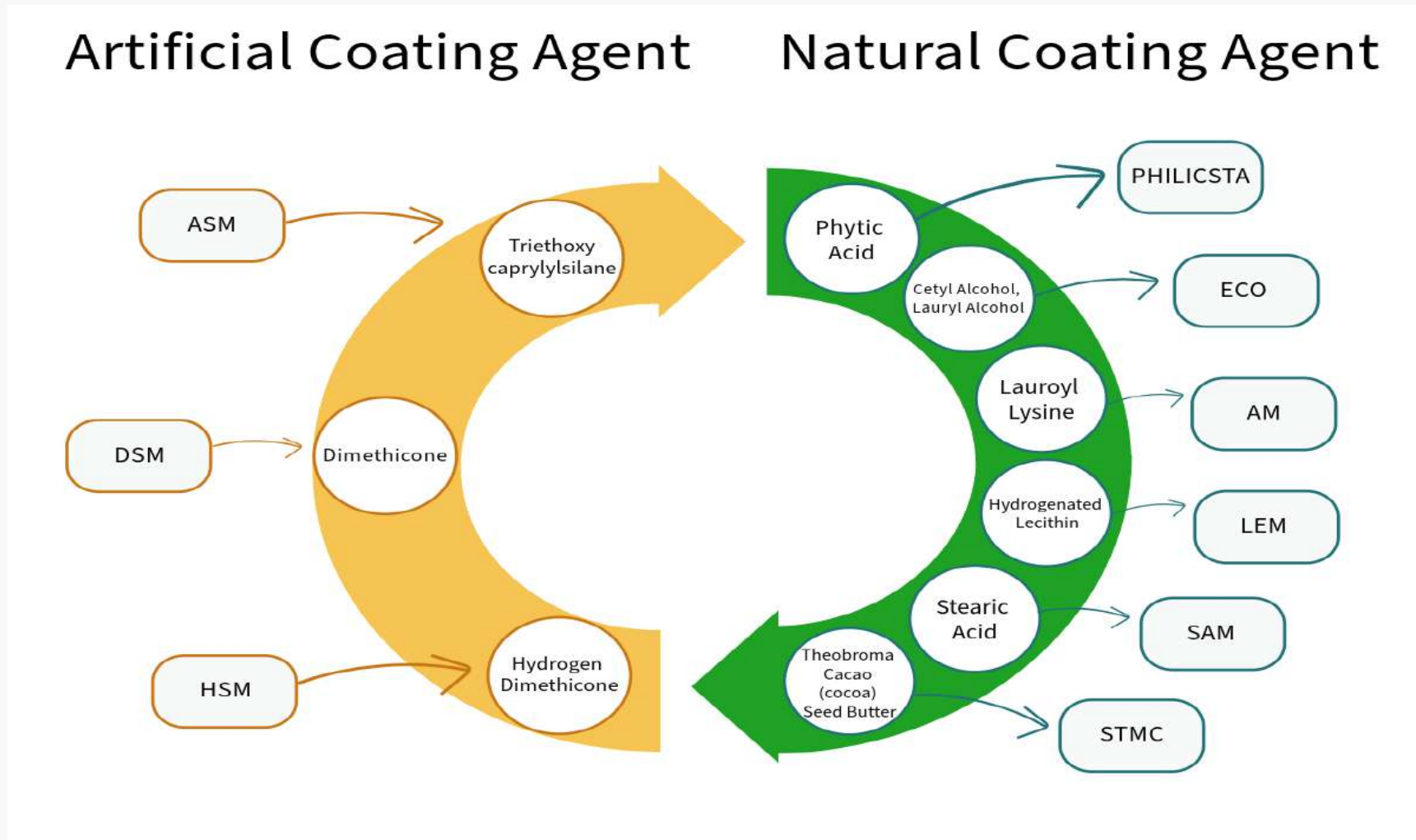
---

# Introduction Of Coating Agent Control



Luxon has been developing surface treatment technologies for over 15 years and has experience with a variety of surface treatments. Surface treatment normally use either dry or wet processes, but Luxon choosing the complex and pricey wet method. This leads to a higher level of quality.

In addition to the surface treatments shown in the diagram below, Luxon offers surface treatment customization services based on customer specifications.



## Natural Coating Agent

	<u>Lauroyl Lysine</u>	<u>Stearic Acid</u>	<b>Hydrophilic !</b> <u>Phytic Acid</u>
<u>Character</u>	Natural Coating Agent Skin Affinity Soft Feeling Moisturizing Feeling	Natural Coating Agent Skin Affinity Soft Feeling Moisturizing Feeling	Good Re-Dispersibility Recommend For Toner, Color Cosmetic, Eyeshadow Enhanced Stability In O/W

## Artificial Coating Agent

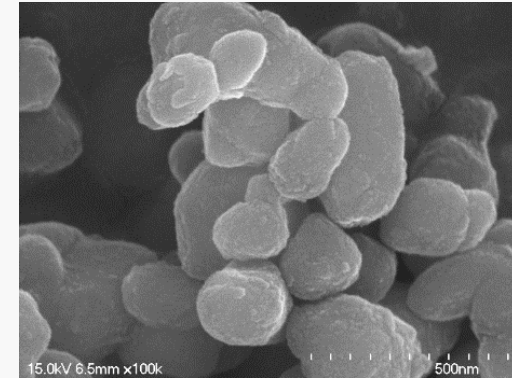
	<u>Triethoxycaprylylsilane</u>	<u>Dimethicone</u>	<u>Hydrogen Dimethicone</u>
<u>Character</u>	Long-Lasting Effect Improvement Dispersibility Light Feeling Improved Hydrophobicity	Long-Lasting Effect Improved Dispersibility Soft Feeling Slightly Wet Feeling	Reduction Of H2 Gas Generation Advanced Methicone Soft Feeling Slightly Wet Feeling

## TiO2 Series

Titanium dioxide is a key basic element for color cosmetics.

For example, TiO<sub>2</sub> impacts the texture, skin adherence, and long-lasting properties of liquid foundation. During the manufacturing process, high-quality titanium dioxide is used, which has an impact on oil dispersibility and emulsification solubility.

Luxon is devoted to improving product quality and expanding the range of surface treatments. In particular, we are conducting research to advance the field of surface treatment with natural materials.



INCI Name	Product Name	Particle Size(μm)	Properties
Titanium Dioxide Triethoxycaprylylsilane Aluminium Hydroxide	LX Bianco 200	0.20~0.30	Milk Skin Sensation Excellent Affinity To Skin
Titanium Dioxide Stearic Acid Aluminium Hydroxide	LX Bianco 200N	0.20~0.30	Milk Skin Sensation Excellent Affinity To Skin
Titanium Dioxide Hydrogen Dimethicone Aluminium Hydroxide	LX Bianco 200 HD	0.20~0.30	Milk Skin Sensation Excellent Affinity To Skin
Titanium Dioxide Methicone Aluminium Hydroxide	LX Bianco 200 MSM	0.20~0.30	Milk Skin Sensation Excellent Affinity To Skin

**Application : W/O emulsion Oil dispersion Powders**

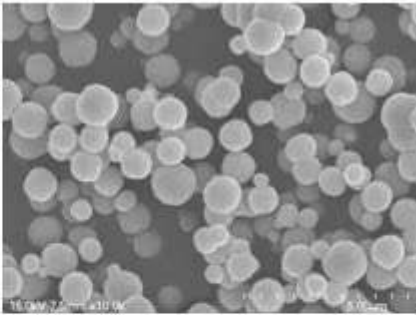
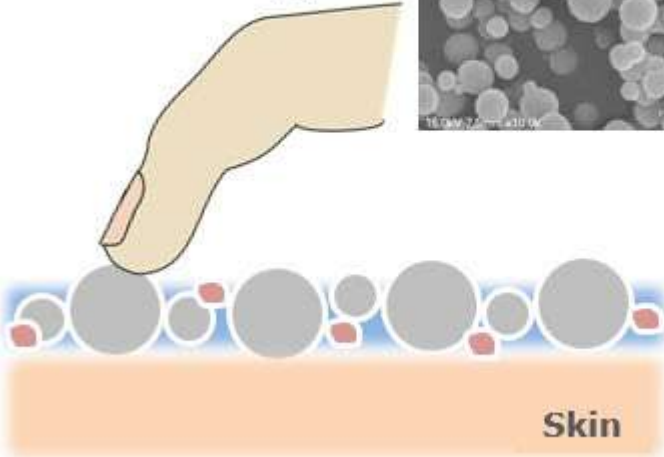
# ZnO Pigment Series



INCI Name	Product Name	Particle Size(μm)	Properties
LX SS-500	Zinc oxide & Silica & Triethoxycaprylylsilane	D50 : 300nm ~ 700nm	Milk Skin Sensation Excellent Affinity To Skin
LX SS-500N ( SS500NLL )	Zinc oxide & Silica & Stearic acid (* Lauroyl Lysine)	D50 : 300nm ~ 700nm / Natural Coating	Milk Skin Sensation Excellent Affinity To Skin

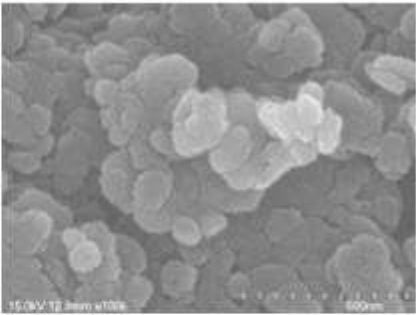
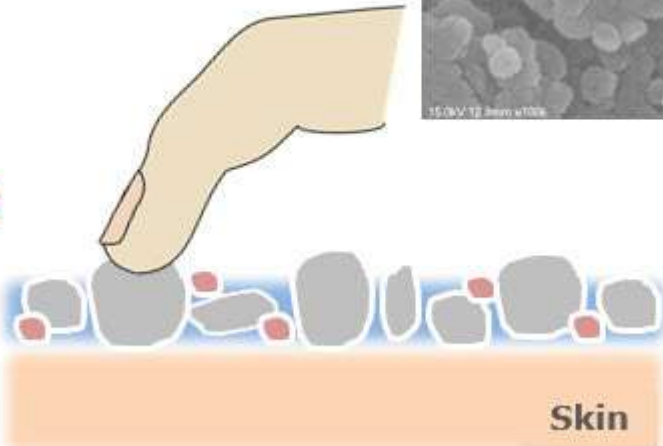
## Application : W/O emulsion Oil dispersion Powders

**Our Product Type**

● ZnO    ● Fe2O3

**Others Product Type**

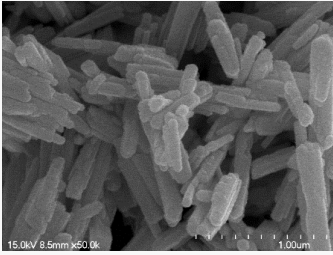
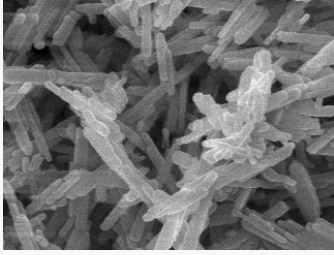
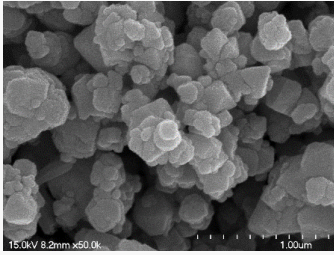
● ZnO    ● Fe2O3

It's different

≠

# Iron Oxide Series



INCI Name	Iron Oxide Yellow Triethoxycaprylylsilane	Iron Oxide Red Triethoxycaprylylsilane	Iron Oxide Black Triethoxycaprylylsilane
SEM			
Product Name	Y-LL ASM	R-RL ASM	B-BL ASM
Particle Size	≤2μm	≤2μm	≤2μm
Hydrophobicity Test	4 Min	4 Min	4 Min
Oil Compatibility Test	Excellent	Excellent	Excellent
Dispersibility	Excellent	Excellent	Excellent



# PHILICSTA Series



	PHILICSTA WHITE	PHILICSTA YELLOW	PHILICSTA RED	PHILICSTA BLACK
Type	TiO <sub>2</sub>	Iron Oxide	Iron Oxide	Iron Oxide
INCI	Titanium Dioxide & Phytic Acid	Iron Oxide Yellow & Phytic Acid	Iron Oxide Red & Phytic Acid	Iron Oxide Black & Phytic Acid
CAS. NO	13463-67-7 & 83-86-3	51274-00-1 & 83-86-3	1309-37-1 & 83-86-3	12227-89-3 & 83-86-3
Particle Size	250nm	2um max	2um max	2um max
Oil Absorption	20 ~ 50	70 ~ 110	20 ~ 50	20 ~ 50
Hydrophobicity [LXTM-007]	1.0 max	1.0 max	1.0 max	1.0 max



## Application

Color Cosmetic

Eye Shadow

Easy To Disperse Without Grinding

Enhanced Stability in O/W



**Raw Material**   **Philicsta Red**



**Raw Material**   **Philicsta Yellow**



**Raw Material**   **Philicsta Black**



# Test Result of Redispersibility In Water

**1** : Raw Material    **2** : Philicsta Series

<p>In put powder</p> <p>500rpm; 3 min</p>				
<p>Precipitation for 24 hr</p>				
<p>Hand Shaking 10 times, Turn Over</p>				

**Excellent  
Redispersibility**

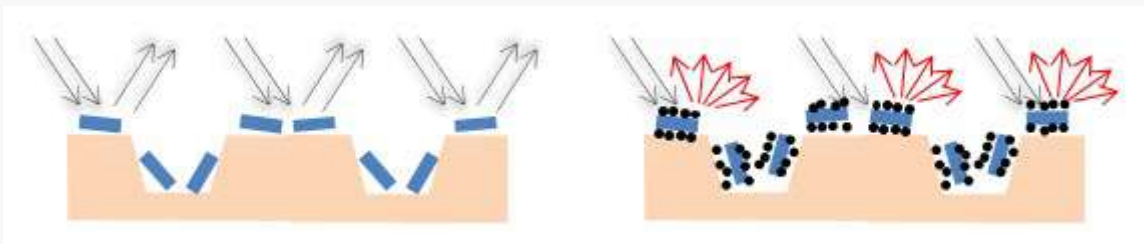
# Complex Powder



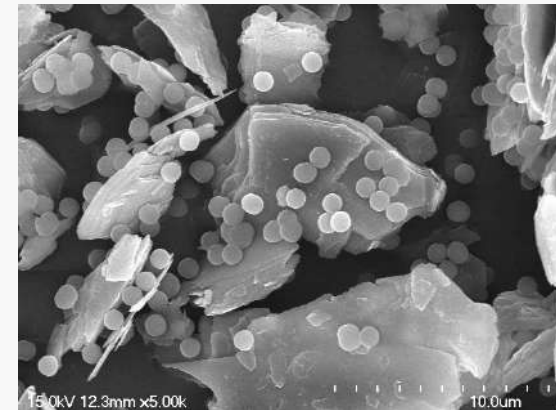
Grade	Descriptions	Proposal	Avg. Particle size(nm)	Oil Absorption (ml/100g)
LX Mimosil	Mica & Silica	Skin Care & Make-up	10 ~ 16	80 ~ 120
LX Tamisil	Talc 46R % Silica		8 ~ 15	30 ~ 70

Before complex

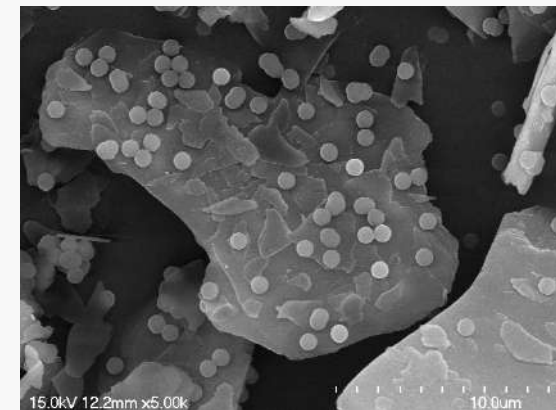
After complex



**LX Tamisil**



**LX Mimosil**



**Before**

- General Reflection
- Luster 2D Substrate
- Light Reflection

**After**

- Less Visible Skin Imperfection
- Natural Skin Tone
- Light Transmitting
- Scattering
- Reduce Contrast

# Table Of Contents

---

## Introduction

### 1. Zinc Oxide Dispersion

---

### 2. Titanium Dioxide Dispersion

---

### 3. Zinc Oxide Powder

---

### 4. Titanium Dioxide Powder

---

### 5. Pigment Dispersion

---

# Mineral Suncare Technology



Zinc Oxide and Titanium Dioxide are important eco-friendly, mineral sun care ingredients. They react more gently on sensitive skin than organic ingredients such as Oxybenzone or Octinoxate. Because mineral suncare ingredients cause less hormonal disruption, they can be recommended for people with sensitive skin or those whose skin gets irritated quickly. Luxon provides high-quality UV filters in dispersion and powder form. We provide formulation guides based on customer SPF and UVA requirements.

## Comparison Of The UV Protection Effects



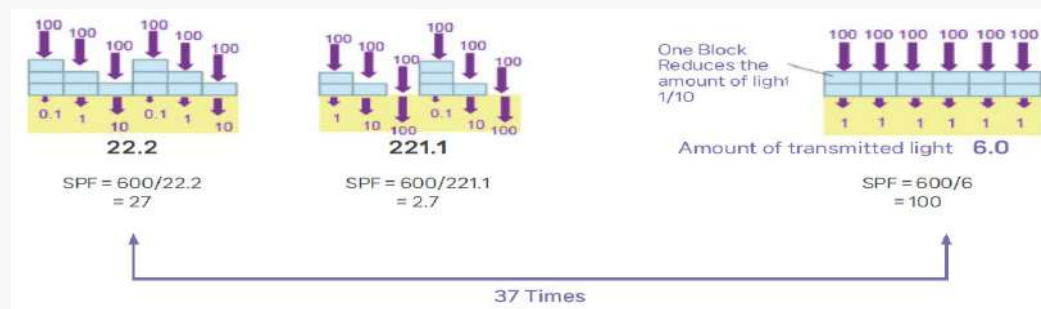
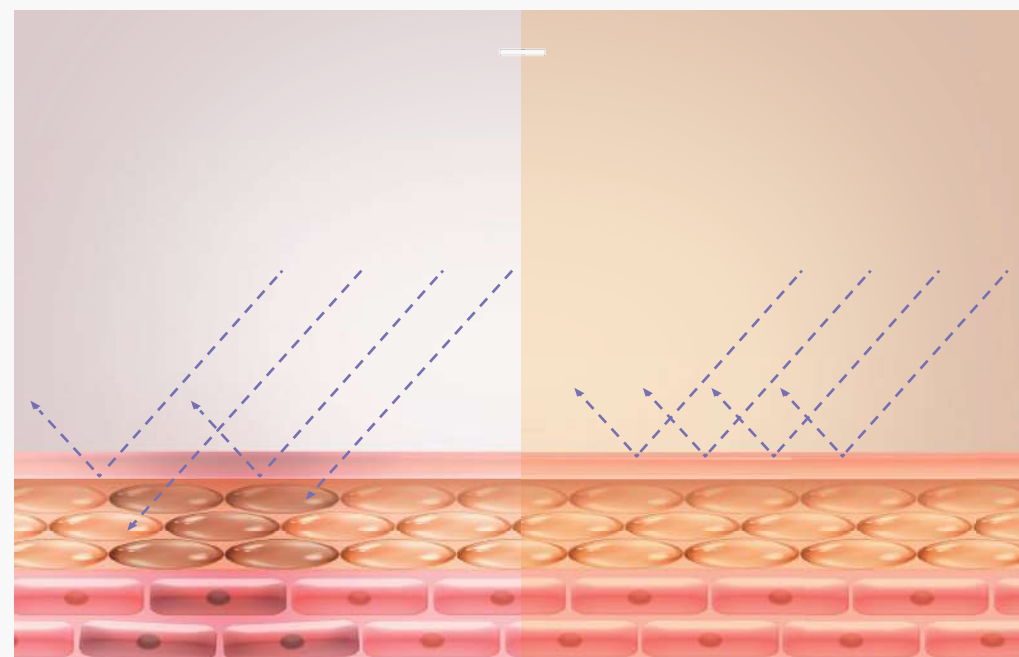
Oxybenzone

COc1ccc(cc1C(=O)c2ccccc2)O

Octinoxate

CCCCCOC(=O)/C=C/c1ccc(OC)cc1

When exposed to Oxybenzone, Octinoxate, coral reefs in the water eventually turn white and die.



# Detailed Comparison Of Powder And Dispersion

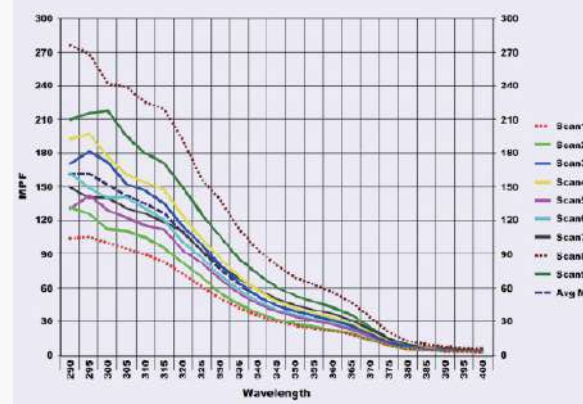


Using The Powder  
HTT1223SB-CA10

Using The Dispersion  
HTU0115SB-CA11



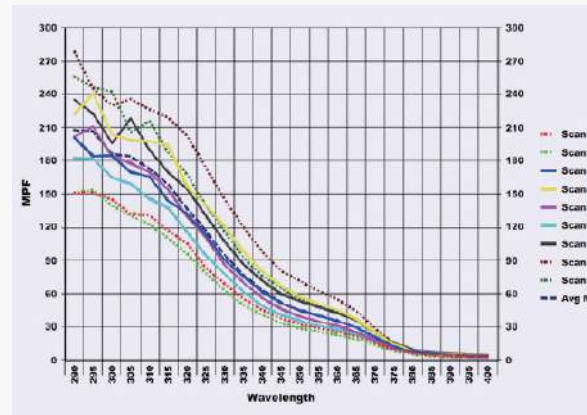
## Powder



### Summary Results

	Value	STDV
SPF:	80.96	17.38
UVA/UVB ratio:	0.622	0.02
Boots Star Rating (2004):	3	Good
UVA I/UV Ratio:	0.74	High
Max %T COV:	21.67	
Critical Wavelength:	378.1	0.51
Curve Area:	171.66	9.02
UVA PF:	37.17	7.37
Erythema UVA PF:	30.68	5.83

## Dispersion



### Summary Results

	Value	STDV
SPF:	94.71	15.59
UVA/UVB ratio:	0.617	0.02
Boots Star Rating (2004):	3	Good
UVA I/UV Ratio:	0.74	High
Max %T COV:	20.7	
Critical Wavelength:	377.9	0.53
Curve Area:	178.97	7.72
UVA PF:	44.47	7.65
Erythema UVA PF:	33.49	5.76

PHASE	Ingredient	INCI	HTT1223SB -CA10	HTU0115SB -CA11
			%	%
A	DC 245	Cyclopentasiloxane	18.00	15.00
	SeraSense SF PTM	Phenyl trimethicone	600	6.00
	LX GEL A 20	Dimethicone, Dimethicone/Dimethicone Crosspolymer	5.00	5.00
B	Cetiol CC	Dicaprylyl Carbonate	5.00	5.00
	BENTON 38V CG	Disteardimonium Hectorite	0.300	0.30
	Microcare e9016	Cetyl PEG/PPG-10/1 Dimethicone	3.00	1.20
C	Plurol Diisostearique	Polyglyceryl-3 Diisostearate	0.50	0.50
	RHEODOL AO-15	Sorbitan Sesquioleate	0.50	0.50
	LX HPA-150	Zinc Oxide, Triethoxycaprylylsilane	18.00	
D	NT 95	Titanium Dioxide, Aluminum Hydroxide, Isostearic Acid	300	
	LX SS500	Silica	2.00	2.00
D'	LX DZT 60	Zinc Oxide, Titanium Dioxide, Aluminum Hydroxide, Isostearic Acid, Cyclopentasiloxane, Cetyl PEG/PPG-10/1 Dimethicone, Triethoxycaprylylsilane		20.00
	LX DZ705E	Zinc Oxide, Cyclopentasiloxane, Cetyl PEG/PPG-10/1 Dimethicone, Triethoxycaprylylsilane		10.00
	Water	Water	TO.100	TO.100
E	LX MOILUB 1000	Biosaccharide Gum-1	2.00	2.00
	MOILUB 701A	PEG/PPG-17/6 Copolymer	2.00	2.00
	Sodium Chloride	Sodium Chloride	1.20	1.20
	Disodium EDTA	Disodium EDTA	0.02	0.02
F	Natureclean RP9	Raspberry Ketone/Propanediol	2.50	2.50

# Detailed Comparison Of Dispersion



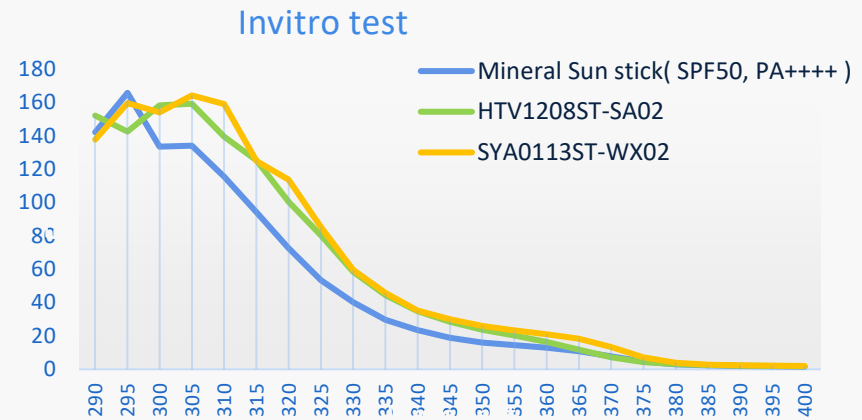
## Mineral Sun Stick (SPF50, PA++++)

### Components by version

( Unit : % )

PHASE	INGREDIENTS	Reference Sample	(#1)	(#2) New
			2022. 12. 08	2025. 01. 13
			HTV1208ST-SA02	SYA0113ST-WX02
A	MIPEARL BGC		20.00	25.00
	CERESIN		10.00	12.00
	HICOS GTC		8.00	8.00
	HALLBRITE BHB		6.00	6.00
	Synthetic wax		5.50	5.50
	Cetiol A		5.00	5.00
	MOICOS-N115		2.50	2.50
	Preservative		1.00	1.00
B	ELASTA SP101		2.00	
	LX DZN 70HAB		20.00 (14.00)	
	LX DZN 70HAB H			18.00 (12.60)
	LX DTN 60 AB		20.00 (12.00)	
	LX DTN 60 AB H			15.00(9.00)
	Invitro Test	<b>SPF</b>	<b>50.31</b>	<b>60.04</b>
	<b>UVA</b>	<b>18.79</b>	<b>26.69</b>	<b>29.4</b>

### In-vitro value



Sample Name: Reference Sample	Value	STDV	Sample Name: HTV1208ST-SA02	Value	STDV	Sample Name: SYA0113ST-WX02	Value	STDV
SPF	<b>50.31</b>	6.11	SPF	<b>60.04</b>	10.28	SPF	<b>68.02</b>	9.6
UVA	<b>18.79</b>	2.23	UVA	<b>26.69</b>	5.6	UVA	<b>29.4</b>	4.49
Critical Wavelength	369.2	0.42	Critical Wavelength	369	0.3	Critical Wavelength	371.1	0.16

Objective : In-vitro Test for Mineral Sun stick( SPF50, PA++++ )

Company : LUXON Co., Ltd

Date : 2025-01-13

Time : 10:08 AM

Operator : 이수민

Sample Name : HTV1208ST-SA02, SYA0113ST-WX02

Luxon Q.C No : Q20250113-1ST

Client No. :

Sample Prep. : .75mg/cm<sup>2</sup>

Substrate : PMMA Plate

Wavelength Range : 290 to 400

Measurement Standard : User Specified

Equipment : Solar Light SPF-290AS Analyzer

Approved by

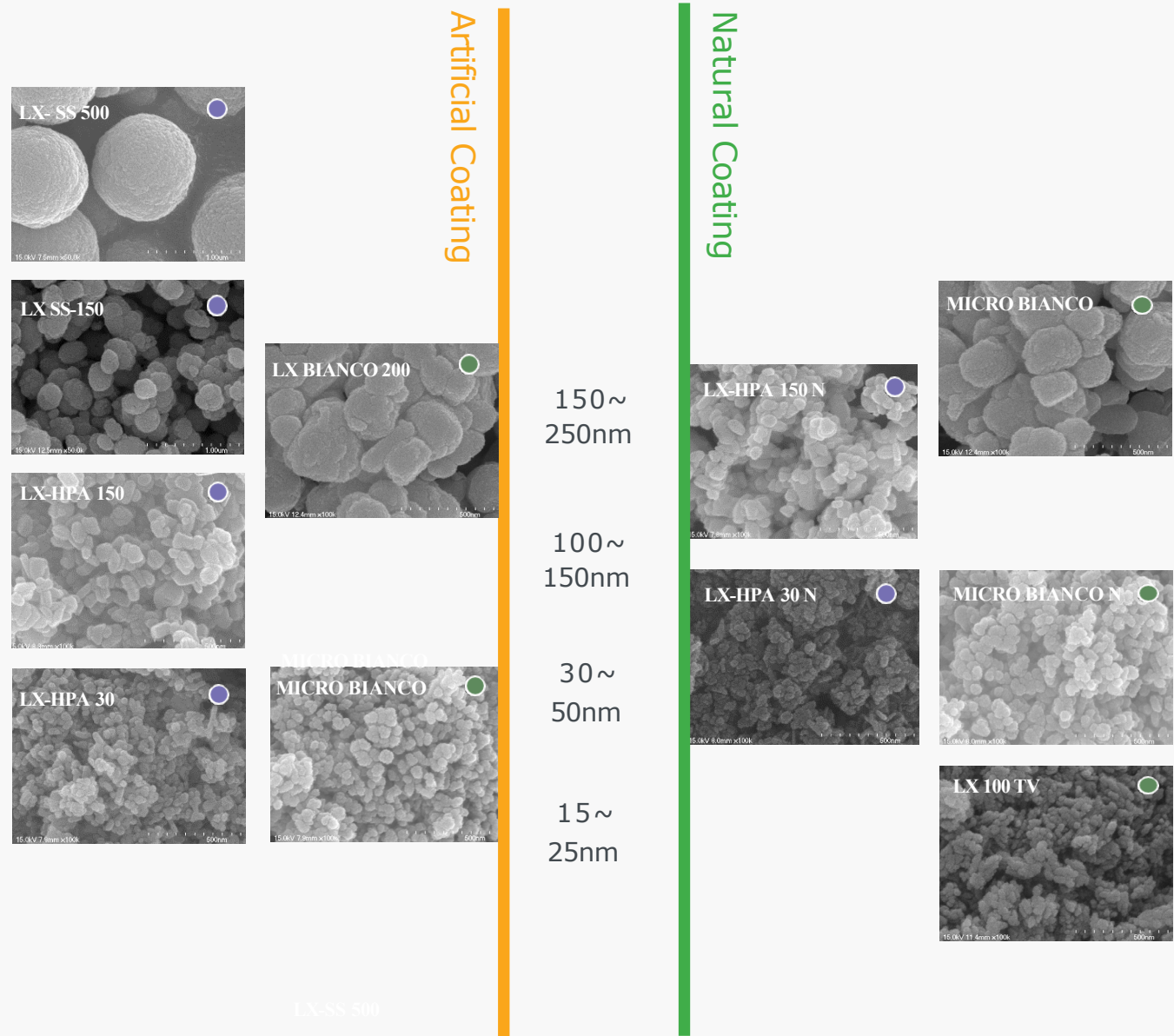
# Zinc Oxide & Titanium Dioxide

- TiO2 Powder
- ZnO Powder

## Patent Number

KR 10-20347830000,  
KR 10-1994980,  
CN ZL201911059904.0

< Coating Agent 4% >



## **Micro Bianco Feature**

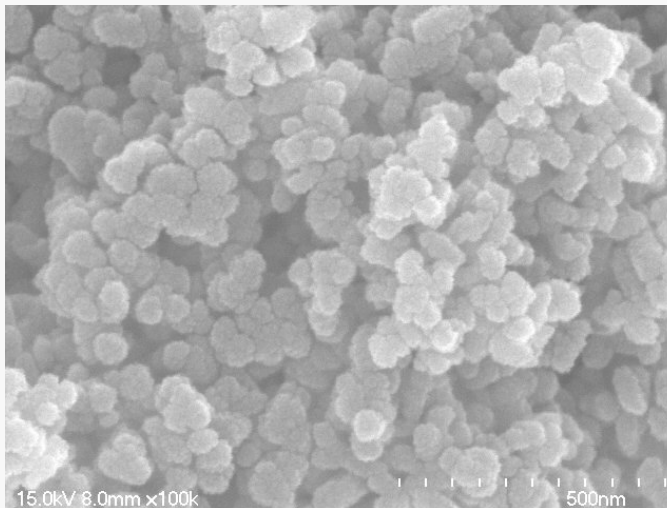
- EWG Green Level '2'
- Best UVB Protection
- Whitening Effect
- Perfect Long-lasting

(TiO<sub>2</sub> 85% + Silica 10%) + AS 5%  
Particle Size: 30~60nm

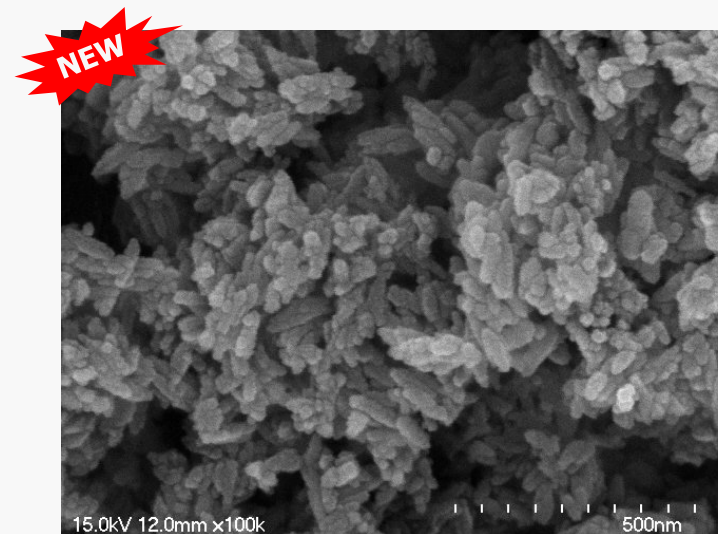
## **LX NT95 Feature**

- EWG Green Level '2'
- Best UVB Protection
- Transparent Effect**, Smooth Feeling
- Perfect Long-lasting

(TiO<sub>2</sub> 85% + Aluminum Hydroxide 10%) + Stearic Acid 5%  
Particle Size: 20nm



**Micro Bianco**



**LX NT95**

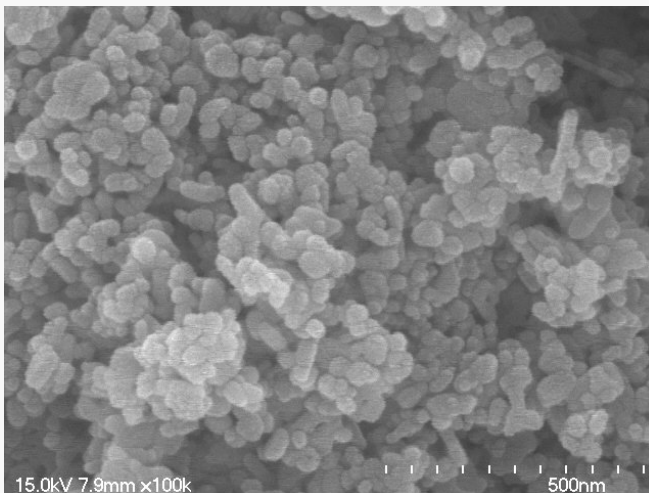


# LX-HPA 30, 30N, 150, 150N

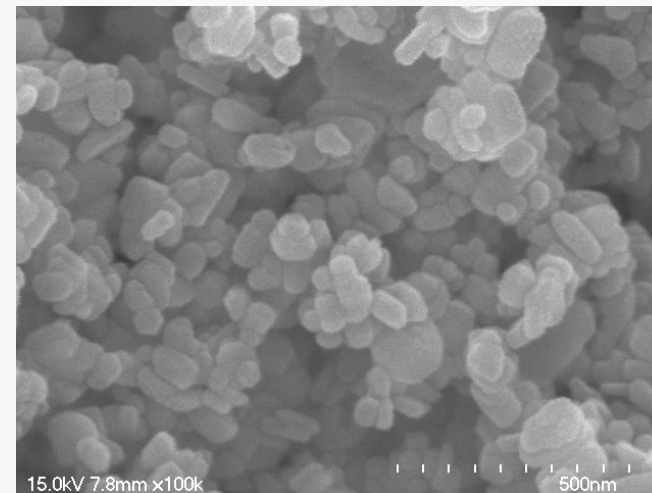


Grade	Descriptions	Proposal	Avg. Particle size(nm)	Oil Absorption (ml/100g)
LX-HPA 30	Zinc Oxide 30nm & Triethoxycaprylylsilane	Sun Cream, Tone-Up Cream, Whitening Agent, Etc.	30~60	10~20
LX-HPA 30N	Zinc Oxide 30nm & Silica & Stearic Acid			
LX-HPA 150	Zinc Oxide 150nm & Triethoxycaprylylsilane		100~200	10~20
LX-HPA 150N	Zinc Oxide 150nm & Silica & Stearic Acid			

LX-HPA 30



LX-HPA 150

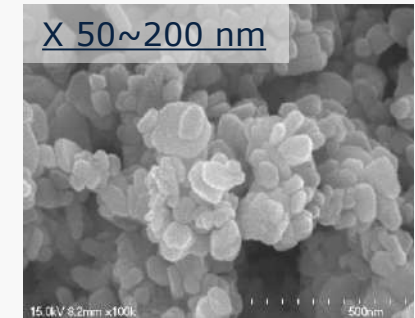
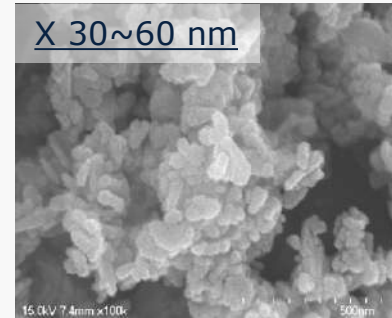
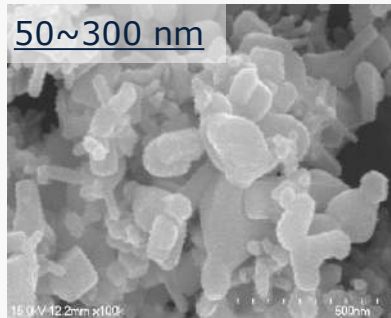


# LX-HPA 30, 30N, 150, 150N



	'B' Company	LX-HPA 30	LX-HPA150
SPF/PA	<b>67.02</b> / 66.6	<b>70.87</b> / 60.02	68.21 / 67.01
ZnO content	97.80	96.62	96.61
Loss on Ignition	1.85	3.02	2.56
Hydrophobicity	5	5	5

SEM  
( X 100 K )



Transparency  
( W. I )

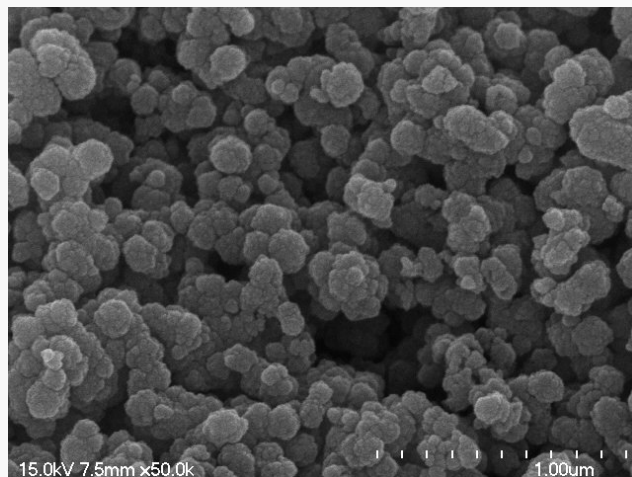


# LX-SS 150, 150N, 500, 500N

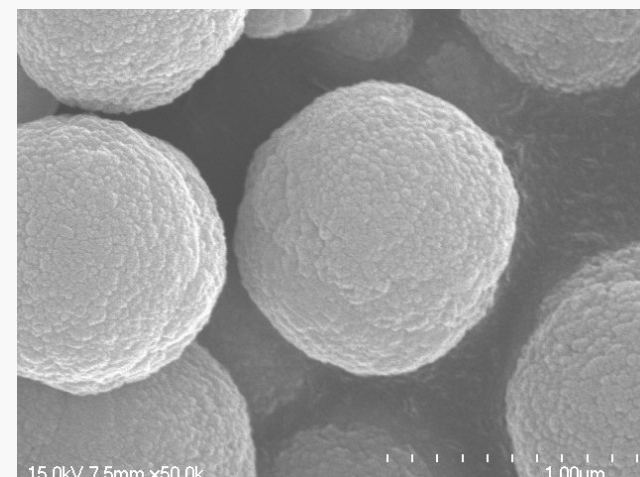


Grade	Descriptions	Proposal	Avg. Particle size(nm)	Oil Absorption (ml/100g)
LX-SS 150	Zinc Oxide 150nm & Silica & Triethoxycaprylylsilane	Sun Cream, Tone-Up Cream, Whitening Agent, Etc.,	100~200	10~20
LX-SS 150N	Zinc Oxide 150nm & Silica & Stearic Acid			
LX-SS 500	Zinc Oxide 500nm & Silica & Triethoxycaprylylsilane		> 400	10~20
LX-SS 500N	Zinc Oxide 500nm & Silica & Stearic Acid			

LX-SS 150



LX-SS 500



# Color Pigment Dispersion



## Primary Color Series

<i>Recommended : O/W Foundation</i>	<b>Color</b>	<i>Recommended : W/S, W/O Foundation</i>
<b>Product Name /INCI</b>		<b>Product Name /INCI</b>
<p><b>EZH TI70</b>  <i>Titanium Dioxide</i>, Butylene Glycol, Poly sorbate, Triethoxycaprylylsilane, Alumina, Silica, <i>Hydrogenated Lecithin</i>.</p>		<p><b>EZ TI65TG</b>  <i>Titanium Dioxide</i>, Caprylic/Capric Triglyceride, Polyhydroxystearic acid, Alumina, Triethoxycaprylylsilane</p>
<p><b>EZ TI50</b>  <i>Titanium Dioxide</i>, Water, Butylene Glycol, Polysorbate, Aluminum Hydroxide, 1,2-Hexanediol, Rosin</p>		
<p><b>EZH IOY50</b>  <i>I.O.Yellow</i>, Propylene Glycol, Butylene Glycol, Poly sorbate, Triethoxycaprylylsilane, Silica, <i>Hydrogenated Lecithin</i>.</p>		
<p><b>EZ IOY40</b>  <i>I.O.Yellow</i>, Water, Butylene Glycol, Polysorbate 60, Aluminum Hydroxide, 1,2-Hexanediol, Rosin</p>		
<p><b>EZH IOR50</b>  <i>I.O.Red</i>, Propylene Glycol, Butylene Glycol, Poly sorbate, Triethoxycaprylylsilane, <i>Hydrogenated Lecithin</i>.</p>		
<p><b>EZ IOR40</b>  <i>I.O.Red</i>, Water, Butylene Glycol, Polysorbate 60, Aluminum Hydroxide, 1,2-Hexanediol, Rosin</p>		
<p><b>EZH IOB60</b>  <i>I.O.Black</i>, Propylene Glycol, Butylene Glycol, Poly sorbate, Triethoxycaprylylsilane, Silica, <i>Hydrogenated Lecithin</i>.</p>		
<p><b>EZ IOB40</b>  <i>I.O.Black</i>, Water, Butylene Glycol, Polysorbate 60, Aluminum Hydroxide, 1,2-Hexanediol, Rosin</p>		

# Pigment Dispersion

## Compare Test of Before and After Milling

Coating Surface Compare



\*After milling, the coating surface is more smoother

Color Compare



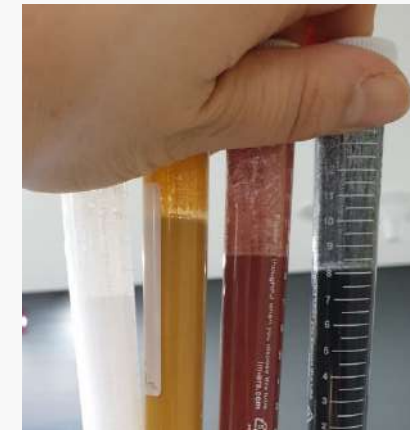
\*After milling, the color became closer to the original color.

## Centrifugal Separator Test



### Test Condition

4000 RPM ; 10 Mins



## Solubility Test of Dispersion



EZIOR45 (Iron oxide red)  
dropped in D.I water



Mixing



Mixing



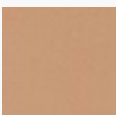

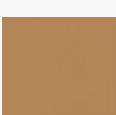


Completely dissolved

# Color Pigment Dispersion



## Primary Color Series

<i>Recommended : O/W Foundation</i>	<b>Color</b>	<i>Recommended : W/S, W/O Foundation</i>
<b>Product Name /INCI</b>		<b>Product Name /INCI</b>
<p><b>EZ DC 21W</b>  <i>Titanium Dioxide</i>, Butylene Glycol, Propylene Glycol, Poly sorbate, <u>I.O.Yellow</u>, <u>I.O.Red</u>, <u>I.O.Black</u>, Triethoxycaprylylsilane, Alumina, <u>Hydrogenated Lecithin</u>.</p>		<p><b>EZ DC 21TG</b>  <i>Titanium Dioxide</i>, Caprylic/Capric Triglyceride, Polyhydroxystearic acid <u>I.O.Yellow</u>, <u>I.O.Red</u>, <u>I.O.Black</u>, Alumina, Triethoxycaprylylsilane</p>
<p><b>EZ DC 22W</b>  <i>Titanium Dioxide</i>, Butylene Glycol, Propylene Glycol, Poly sorbate, <u>I.O.Yellow</u>, <u>I.O.Red</u>, <u>I.O.Black</u>, Triethoxycaprylylsilane, Alumina, <u>Hydrogenated Lecithin</u>.</p>		<p><b>EZ DC 22TG</b>  <i>Titanium Dioxide</i>, Caprylic/Capric Triglyceride, Polyhydroxystearic acid <u>I.O.Yellow</u>, <u>I.O.Red</u>, <u>I.O.Black</u>, Alumina, Triethoxycaprylylsilane</p>
<p><b>EZ DC 23W</b>  <i>Titanium Dioxide</i>, Butylene Glycol, Propylene Glycol, Poly sorbate, <u>I.O.Yellow</u>, <u>I.O.Red</u>, <u>I.O.Black</u>, Triethoxycaprylylsilane, Alumina, <u>Hydrogenated Lecithin</u>.</p>		<p><b>EZ DC 23TG</b>  <i>Titanium Dioxide</i>, Caprylic/Capric Triglyceride, Polyhydroxystearic acid <u>I.O.Yellow</u>, <u>I.O.Red</u>, <u>I.O.Black</u>, Alumina, Triethoxycaprylylsilane</p>
<p><b>EZ DC 24W</b>  <i>Titanium Dioxide</i>, Butylene Glycol, Propylene Glycol, Poly sorbate, <u>I.O.Yellow</u>, <u>I.O.Red</u>, <u>I.O.Black</u>, Triethoxycaprylylsilane, Alumina, <u>Hydrogenated Lecithin</u>.</p>		<p><b>EZ DC 24TG</b>  <i>Titanium Dioxide</i>, Caprylic/Capric Triglyceride, Polyhydroxystearic acid <u>I.O.Yellow</u>, <u>I.O.Red</u>, <u>I.O.Black</u>, Alumina, Triethoxycaprylylsilane</p>
<p><b>EZ DC 25W</b>  <i>Titanium Dioxide</i>, Butylene Glycol, Propylene Glycol, Poly sorbate, <u>I.O.Yellow</u>, <u>I.O.Red</u>, <u>I.O.Black</u>, Triethoxycaprylylsilane, Alumina, <u>Hydrogenated Lecithin</u>.</p>		<p><b>EZ DC 25TG</b>  <i>Titanium Dioxide</i>, Caprylic/Capric Triglyceride, Polyhydroxystearic acid <u>I.O.Yellow</u>, <u>I.O.Red</u>, <u>I.O.Black</u>, Alumina, Triethoxycaprylylsilane</p>





# Thank you

**Do you have any questions?  
Please contact us!**  
[www.luxonkorea.co.kr](http://www.luxonkorea.co.kr)



**Korea Factory/R&D** : 58, Surihol-ro 934beon-gil, Beobwon-eup, Paju-si, Gyeonggi-do, Republic of Korea.  
Tel : + 82-31-943-7751 Fax:+82-31-943-7752

**China HuZhou Factory** : No.328 Guangyuan Road,Wuxing District,Huzhou City, ZheJiang Province, China.  
Tel : + 86-572-2607665 Fax:+ 86-572-2607-675

**Shanghai Branch** : Rm 2116,Block A,East International Building, No.85 Loushanguan Rd, Changning District, Shanghai, China.  
Tel : + 86-21-6278-2288~216 / Fax:+86-21-6278-3723