



LX PMSQ Series

Product Description

LX PMSQ is a silicone resin sphere with 3-dimensional network structure.

It can scatter light from as many angles as the soft focus effect of the lens, and naturally expresses skin shades.

When utilized, the LX PMSQ P50 & LX PMSQ P100 products feel incredibly soft. It fills in fine lines and wrinkles and creates a soft focus effect on the skin when applied, giving the appearance of younger skin. In general, PMSQ powder does not induce adverse reactions on the skin and can be used even on sensitive skin, earning a score of 1 on "The Skin Deep ingredient hazard score". (EWG)

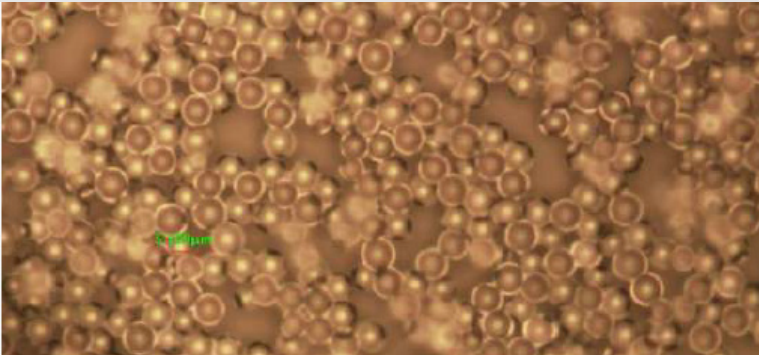
Specification

INCI Name	Product Name	CAS.NO	Particle Size (μm)	Oil Absorption (ml/100g)
Poly Methyl Silsesquioxane	LX PMSQ P50	68554-70-1	3.5 ~ 6.5	30 ~ 70
	LX PMSQ P100		8.0 ~ 13.0	

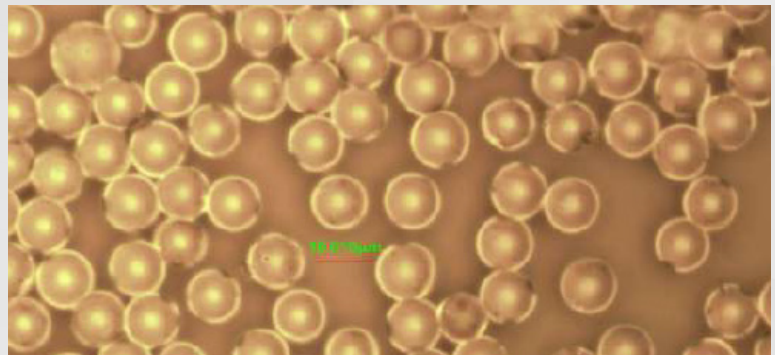
Feature

- Low reflective index 1.43
- Does not dissolve or swell in all sorts of solvent
- Excellent water repellency
- More lubrication, flexibility
- Better skin feel
- Excellent elasticity

LX PMSQ P50



LX PMSQ P100





Potential Use in Cosmetic

- Foundations
- Pressed powders
- Facial creams and lotions
- Lipstick
- Eye shadow
- Mascara
- Anti-aging products

Formulation	Ingredient	%
Instant Anti-aging Stick	LX PMSQ P50	22%
Tone-up Ultra Sun O/W	LX PMSQ P50	1.5%
Ultra Light Sun Cream O/W	LX PMSQ P50	1.5%
Ultra Moisture Sun Cream O/W	LX PMSQ P50	1%
Sun Block Milk O/W	LX PMSQ P50	0.6%
Tone-up Sun Block O/W	LX PMSQ P50	0.6%
Shaking Sun Milk W/S	LX PMSQ P50	1%
Double Make Up Foundation W/S	LX PMSQ P50	1.5%
Semi Matte Foundation W/S	LX PMSQ P50	2%
Bosong Loose Powder 1	LX PMSQ P100	47%
Bosong Loose Powder 2	LX PMSQ P50	47%

Instant Anti-aging Stick

Lab No.:HTW0331LB-SA04

Standard Operating Procedures

- Heat phase A to 90 °C
- After stirring phase B, put into phase A Agi mix at 2000RPM for 15 min
- Finish after 35 °C cooling

PHASE	INGREDIENTS	INCI	%
A	Cetiol AB	C12-C15 Alkyl Benzoate	TO100
	Cetiol CC	Dicaprylyl Carbonate	12.50
	MOICOS-N115	Methyl Hydrogenated Rosinate	12.50
	BEES WAX	Bees Wax	12.50
	ODM	Octyldodecyl Mylistate	10.00
	Carnauba	Copernicia Cerifera (Carnauba) Wax	3.00
	Candelilla Wax	Candelilla Wax	6.00
	Hicos PGIS	Polyglyceryl-2 Triisostearate	0.50
B	Isoamyl laurate	Isoamyl laurate	0.50
	LX PMSQ P50	Polymethylsilsesquioxane	22.00
	LX SS 500N	Zinc Oxide, Silica, Stearic acid	3.50
	LX SS 500NLL	Zinc Oxide, Silica, Lauroyl lysine	3.50
	SPHESTA MD7 AM	Silica, Lauroyl Lysin	2.00
	Preservative	Phenoxy ethanol, Ethylhexylglycerin	p.s

Tone-up Ultra Sun O/W (SPF50+ PA++++)

Lab No.:HTU0622SB-WA02-01

Standard Operating Procedures

- After heating phase A-1 to 80°C and stirring, put into the stirred phase A
- After stirring the phase B heated to 70°C, put it into phase A; Homomix at 3000 RPM for 10min
- After heating and stirring phase C to 80°C, put in phase A; Homomix at 3000 RPM for 10min
- Put D phase at 45°C
- Finish after 35 °C cooling

PHASE	INGREDIENTS	INCI	%
A	D.I.WATER	Water	TO100
	LX DTN 50 W	Please refer to LUXON MSDS	15.00
A-1	Glycerin	Glycerin	3.00
	MOILUB 1000	Biosaccharide Gum-1	1.00
	MOILUB 701A	PEG/PPG-17/6 Copolymer	1.00
	TEA	Triethanolamin	q.a
	Carbomer 940	Cabomer	0.10
	Keltrol F	Xanthan gum	0.10
	SEPINOV™ EMT 10	Hydroxyethyl Acrylate/Sodium Acryloyldimethyl Taurate Copolymer	0.10
	Disodium EDTA	Disodium EDTA	q.a
	Allantoin	Allantoin	q.a
B	SF1000N 6sc	Dimethicone	4.00
	LX PMSQ P50	Polymethylsilsesquioxane	1.50
	Stearic acid	Stearic acid	1.80
	Lanette O	Cetearyl Alcohol	1.20
	Arlacel™ 165	Glyceryl Stearate, PEG-100 Stearate	0.80
	Dowsil F2-3196	Caprylyl Methicone	0.80
	KF-96L-1.5cs	Dimethicone	0.50
C	PARSOL® MCX	Ethylhexyl Methoxycinnamate	7.50
	PARSOL® HMS	Homosalate	3.00
	PARSOL® EHS	Ethylhexyl Salicylate	3.00
	UVINUL® A PLUS	Diethylamino Hydroxybenzoyl Hexyl Benzoate	3.00
	Tinosorb® S	Bis-Ethylhexyloxyphenol Methoxyphenyl Triazine	2.00
D	Natureclean RP9	Raspberry Ketone/Propanediol	2.50



Ultra Light Sun Cream O/W (SPF50+ PA++++)

Lab No.:HTU0622SB-WA03-01

Standard Operating Procedures

- After heating phase A-1 to 80°C and stirring, put into the stirred phase A
- After stirring the phase B heated to 70°C, put it into phase A; Homomix at 3000 RPM for 10min
- After heating and stirring phase C to 80°C, put in phase A; Homomix at 3000 RPM for 10min
- Put D phase at 45°C
- Finish after 35 °C cooling

PHASE	INGREDIENTS	INCI	%
A	D.I.WATER	Water	TO100
	LX DTN 50W	Please refer to LUXON MSDS	4.00
A-1	Glycerin	Glycerin	3.00
	MOILUB 1000	Biosaccharide Gum-1	1.00
	MOILUB 701A	PEG/PPG-17/6 Copolymer	1.00
	Carbomer 940	Cabomer	0.10
	Keltrol F	Xanthan gum	0.10
	SEPINOV™ EMT 10	Hydroxyethyl Acrylate/Sodium Acryloyldimethyl Taurate Copolymer	0.10
	Disodium EDTA	Disodium EDTA	q.a
	Allantoin	Allantoin	q.a
	SF1000N 6sc	Dimethicone	2.00
	LX PMSQ P50	Polymethylsilsesquioxane	1.50
B	Stearic acid	Stearic acid	1.80
	Lanette O	Cetearyl Alcohol	1.20
	Arlacel™ 165	Glyceryl Stearate, PEG-100 Stearate	0.80
	Dowsil F2-3196	Caprylyl Methicone	0.80
	MOICOS-N115	Methyl Hydrogenated Rosinate	0.50
	KF-96L-1.5cs	Dimethicone	2.00
	PARSOL® MCX	Ethylhexyl Methoxycinnamate	7.50
	PARSOL® HMS	Homosalate	3.00
C	PARSOL® EHS	Ethylhexyl Salicylate	3.00
	UVINUL® A PLUS	Diethylamino Hydroxybenzoyl Hexyl Benzoate	3.00
	Tinosorb® S	Bis-Ethylhexyloxyphenol Methoxyphenyl Triazine	2.00
	Natureclean RP9	Raspberry Ketone/Propanediol	2.50
D	Alcohol	Alcohol	0.80
	TEA	Triethanolamin	q.a
	DACHEA EZ IOY 40	Please refer to LUXON MSDS	q.a

Ultra Moisture Sun Cream O/W (SPF50+ PA++++)

Lab No.:HTU0624SB-WA04-01

Standard Operating Procedures

- After heating phase A-1 to 80°C and stirring, put into the stirred phase A
- After stirring the phase B heated to 70°C, put it into phase A; Homomix at 3000 RPM for 10min
- After heating and stirring phase C to 80°C, put in phase A; Homomix at 3000 RPM for 10min
- Put D phase at 45°C
- Finish after 35 °C cooling

PHASE	INGREDIENTS	INCI	%
A	D.I.WATER	Water	TO100
	LX DTN 50W	Please refer to LUXON MSDS	4.00
A-1	MOILUB 1000	Biosaccharide Gum-1	5.00
	MOILUB 701A	PEG/PPG-17/6 Copolymer	2.00
	Carbomer 940	Cabomer	0.12
	Keltrol F	Xanthan gum	0.10
	SEPINOV™ EMT 10	Hydroxyethyl Acrylate/Sodium Acryloyldimethyl Taurate Copolymer	0.10
	Disodium EDTA	Disodium EDTA	q.a
	Allantoin	Allantoin	q.a
	SF1000N 6sc	Dimethicone	2.00
B	LX PMSQ P50	Polymethylsilsesquioxane	1.00
	Stearic acid	Stearic acid	1.00
	Lanette O	Cetearyl Alcohol	1.00
	Arlacel™ 165	Glyceryl Stearate, PEG-100 Stearate	1.00
	Dowasil F2-3196	Caprylyl Methicone	0.80
	MOICOS-N115	Methyl Hydrogenated Rosinate	0.50
	Myristic Acid	Myristic Acid	0.10
	KF-96L-1.5cs	Dimethicone	2.00
C	PARSOL® MCX	Ethylhexyl Methoxycinnamate	7.50
	PARSOL® HMS	Homosalate	3.50
	PARSOL® EHS	Ethylhexyl Salicylate	3.50
	UVINUL® A PLUS	Diethylamino Hydroxybenzoyl Hexyl Benzoate	3.50
	Tinosorb® S	Bis-Ethylhexyloxyphenol Methoxyphenyl Triazine	2.00
D	Natureclean RP9	Raspberry Ketone/Propanediol	2.50
	Alcohol	Alcohol	0.80
	TEA	Triethanolamin	q.a
	DACHEA EZ IOY 40	Please refer to LUXON MSDS	q.a

Sun Block Milk O/W (SPF45 PA++++)

Lab No.:HTU0622SB-WA03-01

Standard Operating Procedures

- After heating phase A-1 to 80°C and stirring, put into the stirred phase A
- After stirring the phase B heated to 70°C, put it into phase A; Homomix at 3000 RPM for 10min
- After heating and stirring phase C to 80°C, put in phase A; Homomix at 3000 RPM for 10min
- Put D phase at 45°C
- Finish after 35 °C cooling

PHASE	INGREDIENTS	INCI	%
A	D.I.WATER	Water	TO100
	LX DZ 65 W	Please refer to LUXON MSDS	11.00
B	GE-26	Glycereth-26	6.00
	LX MOILUB 1000	Biosaccharide Gum-1	1.50
	MOILUB 701A	PEG/PPG-17/6 Copolymer	1.00
	SEPINOV™ EMT 10	Hydroxyethyl Acrylate/Sodium Acryloyldimethyl Taurate Copolymer	0.25
	ARISTOFLEX AVC	Ammonium Acryloyldimethyltaurate/VP Copolymer	0.20
	Sepimax zen	Polyacrylate Crosspolymer-6	0.15
	Keltrol F	Xanthan gum	0.05
	Disodium EDTA	Disodium EDTA	0.02
	Allantoin	Allantoin	0.02
	Dowsil F2-3196	Caprylyl Methicone	4.00
C	SF0015Z CM56	Cyclopentasiloxane, Cyclohexasiloxane	0.30
	OLIVEM 1000	Cetearyl Olivatate, Sorbitan Olivatate	1.80
	GMS 105	Glyceryl Stearate	0.50
	TEGOCARE 450	Polyglyceryl-3 Methylglucose Distearate	0.40
	Lanette O	Cetearyl Alcohol	0.40
	PARSOL® MCX	Ethylhexyl Methoxycinnamate	7.00
	PARSOL® EHS	Ethylhexyl Salicylate	3.00
	UVINUL® A PLUS	Diethylamino Hydroxybenzoyl Hexyl Benzoate	3.00
	Cetiol® AB	C12-15 ALKYL BENZOATE	2.00
	SILIA LX7 ASM	Silica, Triethoxycaprylylsilane	0.70
D	SPHESTA ECO 10	Silica, Cetyl alcohol, Lauryl alcohol	0.60
	LX PMSQ P50	Polymethylsilsesquioxane	0.60
E	Natureclean RP9	Raspberry Ketone/Propanediol	2.50

Tone-up Sun Block O/W (SPF50 PA+++)

Lab No.:HTW0313SB-WC06

Standard Operating Procedures

- After heating phase A-1 to 80°C and stirring, put into the stirred phase A
- After stirring the phase B heated to 70°C, put it into phase A; Homomix at 3000 RPM for 10min
- After heating and stirring phase C to 80°C, put in phase A; Homomix at 3000 RPM for 10min
- Put D phase at 45°C
- Finish after 35 °C cooling

PHASE	INGREDIENTS	INCI	%
A	D.I.WATER	Water	TO100
	LX DTN 40 W	Please refer to LUXON MSDS	2.50
	LX DZ 65 W	Please refer to LUXON MSDS	8.00
B	GE-26	Glycereth-26	6.00
	LX MOILUB 1000	Biosaccharide Gum-1	1.50
	MOILUB 701A	PEG/PPG-17/6 Copolymer	1.00
	SEPINOV™ EMT 10	Hydroxyethyl Acrylate/Sodium Acryloyldimethyl Taurate Copolymer	0.25
	ARISTOFLEX AVC	Ammonium Acryloyldimethyltaurate/VP Copolymer	0.20
	Sepimax zen	Polyacrylate Crosspolymer-6	0.15
	Keltrol F	Xanthan gum	0.05
	Disodium EDTA	Disodium EDTA	0.02
	Allantoin	Allantoin	0.02
	Dowsil F2-3196	Caprylyl Methicone	4.00
C	SF0015Z CM56	Cyclopentasiloxane, Cyclohexasiloxane	0.30
	OLIVEM 1000	Cetearyl Olivatate, Sorbitan Olivatate	1.80
	GMS 105	Glyceryl Stearate	0.50
	TEGOCARE 450	Polyglyceryl-3 Methylglucose Distearate	0.40
	Lanette O	Cetearyl Alcohol	0.40
	PARSOL® MCX	Ethylhexyl Methoxycinnamate	7.00
	PARSOL® EHS	Ethylhexyl Salicylate	3.00
	UVINUL® A PLUS	Diethylamino Hydroxybenzoyl Hexyl Benzoate	3.00
	Cetiol® AB	C12-15 ALKYL BENZOATE	2.00
	SILIA LX7 ASM	Silica, Triethoxycaprylylsilane	0.70
D	SPHESTA ECO 10	Silica, Cetyl alcohol, Lauryl alcohol	0.60
	LX PMSQ P50	Polymethylsilsesquioxane	0.60
E	Natureclean RP9	Raspberry Ketone/Propanediol	2.50



Shaking Sun Milk W/S (SPF50+ PA++++)

Lab No.:HTU00701SB-MA04

Standard Operating Procedures

- After warming phase A to 85 , homomix at 3000 RPM for 20 min.
- After heating of phase B and stirring at 80 , put into phase A
- Put C phase into A phase
- After heating D phase to 85 , put into A phase; homomix at 3000 RPM for 20 min
- Input E phase, F phase at 45
- Finish after 35 cooling

PHASE	INGREDIENTS	INCI	%
A	D.I.WATER	Water	TO100
	LX DTN 40 W	Please refer to LUXON MSDS	2.50
	LX DZ 65 W	Please refer to LUXON MSDS	8.00
B	GE-26	Glycereth-26	6.00
	LX MOILUB 1000	Biosaccharide Gum-1	1.50
	MOILUB 701A	PEG/PPG-17/6 Copolymer	1.00
	SEPINOV™ EMT 10	Hydroxyethyl Acrylate/Sodium Acryloyldimethyl Taurate Copolymer	0.25
	ARISTOFLEX AVC	Ammonium Acryloyldimethyltaurate/VP Copolymer	0.20
	Sepimax zen	Polyacrylate Crosspolymer-6	0.15
	Keltrol F	Xanthan gum	0.05
	Disodium EDTA	Disodium EDTA	0.02
	Allantoin	Allantoin	0.02
	Dowsil F2-3196	Caprylyl Methicone	4.00
C	SF0015Z CM56	Cyclopentasiloxane, Cyclohexasiloxane	0.30
	OLIVEM 1000	Cetearyl Oliviate, Sorbitan Oliviate	1.80
	GMS 105	Glyceryl Stearate	0.50
	TEGOCARE 450	Polyglyceryl-3 Methylglucose Distearate	0.40
	Lanette O	Cetearyl Alcohol	0.40
	PARSOL® MCX	Ethylhexyl Methoxycinnamate	7.00
	PARSOL® EHS	Ethylhexyl Salicylate	3.00
	UVINUL® A PLUS	Diethylamino Hydroxybenzoyl Hexyl Benzoate	3.00
	Cetiol® AB	C12-15 ALKYL BENZOATE	2.00
	SILIA LX7 ASM	Silica, Triethoxycaprylylsilane	0.70
D	SPHESTA ECO 10	Silica, Cetyl alcohol, Lauryl alcohol	0.60
	LX PMSQ P50	Polymethylsilsesquioxane	0.60
E	Natureclean RP9	Raspberry Ketone/Propanediol	2.50



Double Make Up Foundation W/S (SPF10 PA+)

Lab No.:HTU0624FD-LA02

Standard Operating Procedures

- Heat phase A to 80°C.
- Heat phase B to 60°C, then Homomix at 3000rpm for 5minutes. And add to phase A.
- Add phase C to phase A+B
- Add phase D into phase A+B+C
- After homo dispersing phase E at 3000rpm for 5minutes at 85°C, add to phase A+B+C+D
- Homomix at 3500rpm for 15 minutes.
- Cooling & Defoaming.

PHASE	INGREDIENTS	INCI	%
A	TMS 50C	Cyclopentasiloxane/ Trimethyl siloxysilicate	25.00
	Microcare e9016	Cetyl PEG/PPG-10/1 Dimethicone	3.50
	REODOL AO-15	Sorbitan Sesquioleate	2.00
B	DC 245	Cyclopentasiloxane	5.00
	BENTON 38V CG	Disteardimonium Hectorite	1.50
C	LX MICA DSM	Mica, Dimethicone	1.00
	LX PMSQ P50	Polymethylsilsesquioxane	1.50
	SPHESTA MD 7 AM	Silica, Lauroyl lysine	1.00
D	DACHEA EZH Ti65 M	Please refer to MSDS	22.50
	DACHEA EZH IOY50	Please refer to MSDS	2.60
	DACHEA EZH IOR50	Please refer to MSDS	0.50
	DACHEA EZH IOB60	Please refer to MSDS	0.15
E	Water	Water	To 100
	Disodium EDTA	Disodium EDTA	0.02
	Sodium Chloride	Sodium Chloride	1.50
	MOILUB 1000	Biosaccharide Gum-1	0.50
	Preservative	Phenoxyethanol, Caprylyl Glycol, 1,2hexandiol	2.00
	Allantoin	Allantoin	q.a
	D-Panthenol	D-Panthenol	q.a



Semi Matte Foundation W/S (SPF25 PA++)

Lab No.:HTU0625FD-LB02

Standard Operating Procedures

- Heat phase A to 80°C.
- Heat phase B to 60°C, then Homomix at 3000rpm for 5minutes. And add to phase A.
- Add phase C to phase A+B
- Add phase D into phase A+B+C
- After homo dispersing phase E at 3000rpm for 5minutes at 85°C, add to phase A+B+C+D
- Homomix at 3500rpm for 15 minutes.
- Cooling & Defoaming.

PHASE	INGREDIENTS	INCI	%
A	TMS 50C	Cyclopentasiloxane/ Trimethyl siloxysilicate	20.00
	Microcare e9016	Cetyl PEG/PPG-10/1 Dimethicone	3.50
	REODOL AO-15	Sorbitan Sesquioleate	2.00
	Parsol MCX	Ethylhexyl Methoxycinnamate	5.00
B	Dowsil F2-3196	Caprylyl Methicone	5.00
	BENTON 38V CG	Disteardimonium Hectorite	0.50
C	LX MICA AM	Mica, Lauroyl lysine	1.00
	LX PMSQ P50	Polymethylsilsesquioxane	2.00
	SPHESTA MD 7 AM	Silica, Lauroyl lysine	2.00
D	DACHEA EZH Ti65 M	Please refer to MSDS	27.50
	DACHEA EZH IOY50	Please refer to MSDS	3.00
	DACHEA EZH IOR50	Please refer to MSDS	0.90
	DACHEA EZH IOB60	Please refer to MSDS	0.05
E	Water	Water	To 100
	Disodium EDTA	Disodium EDTA	q.a
	Sodium Chloride	Sodium Chloride	1.50
	MOILUB 1000	Biosaccharide Gum-1	1.00
	Preservative	Phenoxyethanol, Caprylyl Glycol, 1,2hexandiol	q.a
	Allantoin	Allantoin	q.a
	D-Panthenol	D-Panthenol	q.a



Bosong Loose Powder 1

Lab No.:HTV0707LP-PB03

Standard Operating Procedures

- Mix A
- Mix it for two minutes
- After adding B, mix it for 30 seconds

PHASE	INGREDIENTS	INCI	%
A	SILIA LX13	Silica	TO100
	LX PMSQ P100	Polymethylsilsesquioxane	47.00
	ELASTA SP 101	VINYL DIMETHICONE/METHICONE SILSESQUIOXANE CROSSPOLYMER	2.00
B	Preservative	Phenoxy ethanol, Ethylhexylglycerin	p.s



Bosong Loose Powder 2

Lab No.:HTV0707LP-PB04

Standard Operating Procedures

- Mix A
- Mix it for two minutes
- After adding B, mix it for 30 seconds

PHASE	INGREDIENTS	INCI	%
A	SILIA LX13	Silica	TO100
	LX PMSQ P50	Polymethylsilsesquioxane	47.00
	ELASTA SP 101	VINYL DIMETHICONE/METHICONE SILSESQUIOXANE CROSSPOLYMER	2.00
B	Preservative	Phenoxy ethanol, Ethylhexylglycerin	p.s

Thank you.

**Do you have any questions?
Please contact us!**



Korea Factory/R&D : 58, Surihol-ro 934 beon-gil,
Beobwon-eup, Paju-si, Gyeonggi-do, Republic of Korea.
Tel : + 82-31-943-7751 Fax:+82-31-943-7752

China HuZhou Factory : No.328 Guangyuan Road, Wuxing
District, Huzhou City, ZheJiang Province, China.
Tel : + 86-572-2607665 Fax:+ 86-572-2607-675

Shanghai Branch: Rm 2116, Block A, East International
Building, No.85 Loushanguan Rd, Changning District,
Shanghai, China.
Tel : + 86-21-6278-2288~216 / Fax:+86-21-6278-3723